

McDONNELL ANGUS

The Efficiency Breeders

789

Selling

*Performance and
Efficiency Tested*

**REGISTERED YEARLING
ANGUS BULLS**

Bulls OF THE
BIGHORNS

APRIL 20TH 1:00 PM

BUFFALO, WYOMING

BUFFALO LIVESTOCK MARKETING

*We would like to welcome everyone to our
19th annual spring bull sale.*

Our family has always been involved in performance cattle. Darcy's "Papa Leo" (McDonnell) being one of the founding members of the performance movement when he brought Midland Bull Test to life in the 1960s. Leo McDonnell Jr started McDonnell Angus 50 some years ago under those same principles of measuring cattle for genetic traits that are of economically important to ranchers. Then 16 years ago with an innovated idea he expanded it to including measuring cattle for feed intake and efficiency. Today several of the very top efficient Angus sires in the breed originated from this herd.

In 2018, we were given the opportunity to take over the North Dakota unit and appreciate Leo and Sam's help in getting started. For 18 years the bulls off this unit were tested at Midland Bull Test for performance and efficiency using the GrowSafe technology and then sold in May in Bowman, North Dakota. It was always our hope to move back Johnson County and those beautiful Big Horn Mountains, our family made move summer of 2022 and are headquartered now between Buffalo and Kaycee WY.

We want to thank everyone in North Dakota and the surrounding area who helped and supported our program, we will continue to serve our existing customers and look forward to building new relationship and customers here in Wyoming.

The bulls will continue to be developed and tested at Midland Bull Test run by Darcy's brother Steve they have been ultra sounds, efficiency tested and semen tested as well as evaluated for structure, feet and disposition.

We hope you can make the sale, and have a good look at some of the most respected, proven efficient Angus Bulls in the breed. We are continually impressed with all the great feedback we get from ranchers who have been using our genetics for generations. Ranchers who have been through the droughts and tough winter conditions and how pleased they are with how their cattle thrive with limited feed and rugged environments.

Rest assured this program is built around proven genetic claims, we raise our own females. Our females have the MCD or GM prefix, which ensures generations of feed efficient stacked pedigrees. Our cows are hardy, built to withstand the badlands of North Dakota to Mountains and plains of Montana and Wyoming. We will continue raising cattle with BALANCED traits across the board all while promoting sires that are PROVEN EFFICIENT.

Please don't hesitate to reach out if you have any questions on our program or our cattle. 307-217-0735

We look forward to seeing you at the sale!

Vic and Darc



BULL SALE APRIL 20, 2024

BUFFALO, WYOMING
BUFFALO LIVESTOCK MARKETING
LUNCH AT 11 AM | SALE 1 PM

FRIDAY, APRIL 19

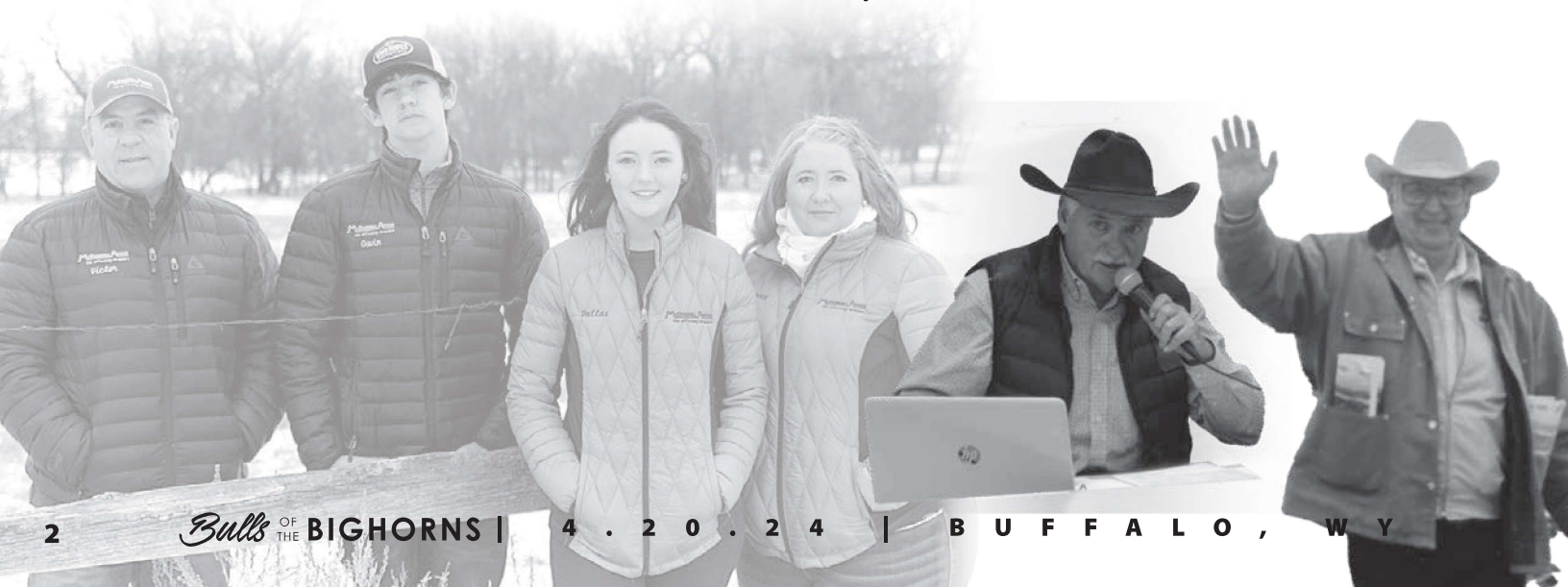
8:00 am Bulls Available
for Viewing
9:00 pm Live Music at
the Cowboy Salon

SATURDAY, APRIL 20

8:00 am Bulls Available
for Viewing
11:00 am Lunch is
Served at Buffalo Livestock
1:00 pm Spring Bull Sale

ACCOMMODATIONS

Hampton Inn 307-684-8899
Buffalo Inn 307-684-7000
Holiday Inn 307-684-9900



SALE CONTACTS MCDONNELL ANGUS

Leo McDonnell 406-780-0176

Victor Goni 307-217-0735

Darcy Goni 307-217-3437

Email: bulls@mcdonnellangus.com

www.mcdonnellangus.com

FRONTIER LIVE SALE

Scott – 406-860-6548

Sam – 406-860-0590

www.frontierlive.com

see page 6 for details

VIEWING

Bulls can be viewed at Midland Bull Test until April 18th and will be sorted and available for viewing at Buffalo Livestock Marketing beginning April 19th

FIRST BREEDING SEASON GUARANTEE

All bull selling for \$3,000 or more will be covered by 50% by seller if they are injured during the first breeding season. Breeding season is defined as the 60-day period following the first turnout of bulls. 50% of the value of the bull up to \$8000 in purchase cost, minus one-half, will be given as credit in a future McDonnell Angus Sale or towards a replacement bull if one of equal quality is available by seller. All injured bulls must be diagnosed by a veterinarian. Please notify us as soon as possible should an injury occurs and must be prior to the bull being sold for salvage. All claims must be made by September 1 of 2024. The guarantee does not replace mortality insurance and does not cover loss due to death or other natural occurrence or negligence.

AUCTIONEER LANDER NICODEMUS 307-421-8141

SALES STAFF

MATT WZNICK WESTERN AG REPORTER 406-489-2414

ANDY REST CATTLE BUSINESS WEEKLY 605-670-5678

AUSTIN SNOOK BUFFALO LIVESTOCK MARKETING 307-290-2161

DIRECT BUFFALO LIVESTOCK MARKETING 307-684-0789

SALE TERMS & CONDITIONS – All cattle sell under the terms and conditions of the American Angus Association

DELIVERY - We deliver for FREE up to 300 miles to a central location.

TAKE HOME CREDIT – \$50 credit on any bull that is taken within 2 days.

SIGHT UNSEEN PURCHASE PROGRAM - Satisfaction guaranteed! Orders placed with Leo or Victor come with a sight unseen guarantee, you don't like what we pick out for you we will make it right !


GENETIC DEFECTS – All bulls showing potential for AM, NH, CA or DD have been tested and if positive, removed from sale. No known carriers are selling, unless otherwise noted.

SEMEN INTEREST - McDonnell Angus retains 1/3 semen interest on bulls in the sale. Full possession and salvage value sells on each animal.

HEALTH & NUTRITION

- HERD HEALTH – Calves are given Endovac at birth as well as probiotic. Spring turn out they are given Endovac, Inforce 3, Alpha 7 and Pinkeye Vaccine. In the Fall they are given Endovac, Inforce 3, Alpha 7, Express 5, Dectomax, and Fusogard. Fusogard is bolstered again over the winter, and a dose of Multi Min.
- NUTRITION – McDonnell Angus maintains a VITAFIRM mineral program year round on our cow herd. The bulls were fed the standard high roughage ration at Midland Bull Test.

DATA

- SEMEN TESTING – All bulls selling have passed a breeding soundness exam, fertility test and scrotal measurements performed by Dr. Liam Robbins of Lewistown MT on March 8 2024
- EFFICIENCY – Bulls test at Midland Bull Test on Growsafe Systems
- GENESEEK – All bulls have been Gnomics tested on the  Powered by Regen Biotech
- EPDs provided are current as of March 27, 2024.

SUPPLEMENT INFORMATION

Available on website as well as sale day with any other updates. Announcement made from the auction block will take precedence over information in this catalog.

We are so fortunate to have the friends and neighbors that we do. From cleaning calving jugs to catching a bull's eye for that perfect picture, there are more folks that lend a hand in the success of our program that we ever could possibly mention. We are so grateful to each and every one of you that has helped this past year.

A Special

Thank You to the following...

- The Steve Williams and the Midland Bull Test Crew for taking such good care of our bulls day to day health needs and providing a facility for the Efficiency Testing.
- John Goggin for Catalog photos of the bulls.
- Liam Robinson with the Diamond R Veterinary Services in Lewistown, MT for semen testing the bulls this year as well as preg testing all our heifers and cows in this past fall.
- Kim Taylor with the Big Horn Vet Clinic in Buffalo, WY for health papers on the Bulls leaving Buffalo after the Sale.
- Scott & Sam Fraser with Frontier Live Sales for the Videos and Online Production.
- Caryl & Company out of Billings, MT for all the amazing Ad and this beautiful catalog.
- Tanner Jensen out of Gold Creek, MT for the fine job clipping this set of bulls.
- Austin Snook and the crew at the Buffalo Livestock Market for providing the sale venue and taking excellent care of our cattle both before and after the sale.
- Marcia Gaines & Kelsey McDonnell for preparing and serving up a wonder meal and sweets on sale day.
- Leo McDonnell for all the countless hours helping working bulls at Midland this past winter – Freeze Branding, Semen Testing, Videoing – We can never Thank You enough.
- Dave Moore of Laramie WY for every creative idea to help us troubleshoot the newest calving or feeding issue.
- Owen Atwell, Colter, Cade and Cale Chamberlain and Grayson Williams for hours of filling in as needed wherever needed in Buffalo or Columbus whenever needed.



READING PERFORMANCE INFORMATION

Expected Progeny Difference (EPD) is the estimate of how future progeny of each sire are expected to perform in each of the traits listed. EPD is expressed in pounds either plus or minus. For example, when used on the same cow, calves sired by a bull with a + 55 weaning EPD should average 10 pounds more than those sired by a bull with a +45 weaning EPD. EPDs are current as of March 27, 2024. Updated EPDs can be found at www.ANGUS.org

CALVING EASE DIRECT (CED EPD)

Is expressed in percentage of unassisted births, predicting the average difference in ease with which a sire's calves will be born when he is bred to first calf heifers. **A positive value is more desirable here.**

BIRTH (BW EPD)

Is expressed in pounds, is a predictor of a sire's ability to transmit birth weight to his progeny. **Breeder's preference can vary here greatly – the closer to 0 the better in our book.**

WEANING (WW EPD)

Is expressed in pounds, is a predictor of a sire's ability to transmit weaning growth to his progeny. **A high positive value is most desirable.**

YEARLING (YW EPD)

Is expressed in pounds, is a predictor of a sire's ability to transmit yearling growth to his progeny. **A high positive value is most desirable.**

333
GM BLACK EAGLE 333
 DOB: 02/22/23 Reg # 20877755 Tattoo: 333
 GRANGER GREAT FALLS 630 GRANGER GREAT FALLS 053
 GRANGER BLACK EAGLE 822 GRNAGER PRIDE RACHEL 890
 GRANGER PRIDE RACHEL 685 GRANGER BLACK CEDAR 150
 GRANGER PRIDE RACHEL 420

RS SURVEYOR 1422 SITZ WISDOM 481T
 MCD-2-9 ENCHANTRESS 687 RS NEW STANDARD R15 U5
 MCD BRUN-9 ENCHANTRESS 201 ROCK'N D PROFICIENT 2915
 BAR ERICA RIGHT TIME 851

CED	BW	WW	YW	MILK	MARB	RE	\$W	\$B
14	-0.5	72	132	38	.56	.49	76	141
ACT. BW	ADJ. WW	WWR	SCROTAL	RFI EPD	GS EPD			
72	660	104	38	-4.01	-.26			

WEANED CALF VALUE (\$ W)

Expressed in dollars per head, is the expected average difference in future progeny performance for preweaning merit. \$W includes both revenue and cost adjustments associated with differences in birth weight, weaning direct growth, maternal milk and mature cow size. The underlying objective being producer will retain 20% of the female progeny as replacements and sell the rest of the cull females and males as feeder calves.

BEEF VALUE (\$ B)

Expressed in dollars per head, is the expected average difference in future progeny performance for post weaning and carcass value compared to progeny of other sires.

MILK (MILK EPD)

Is a predictor of a sire's genetic merit for milk and mothering ability.

MARBLING (MARB EPD)

Intramuscular Fat EPD - Is expressed as a fraction of the difference in Intramuscular fat in the ribeye muscle of a sire's progeny compared to that of other sires. Derived by Ultrasound.

RIBEYE AREA (RE EPD)

Expressed in square inches, is a predictor of the difference in ribeye area of a sire's progeny compared to progeny of other sires. Derived by Ultrasound.

EFFICIENCY EPD (RFI EPD)

Optimizes the balance between performance and efficiency. It measures how efficiently the caloric content of feed is converted into pounds. **A negative # is most desirable.**

SCROTAL

Actual scrotal measurement provided in centimeters taken by Don Kruger with the Dr. Liam Robbins on March 8, 2024.



AAA AVERAGES FOR CURRENT SIRES

CED EPD	BW EPD	WN EPD	YW EPD	Milk EPD	MARB EPD	RE EPD	\$W	\$B	AAA RFI EPD
+6	+1.2	+62	+110	+26	+58	+59	+59	+139	n/a



Unable to attend in person on sale day?

The Sale will be broadcast live on www.frontierlivesale.com



1. Create an account, if you have already done so skip to next step. To create a new account, click on the word **REGISTRATION** in the upper right hand corner. You must fill out the information requested. Then click **CREATE ACCOUNT**. An email will be sent to your email account you provided. Please click the link in the email to activate your new account.
2. Once you click the link, your account will now be activated.
3. At this point, you may click **CONTINUE TO BROWSE OUR SITE**. This allows you to view all upcoming auctions.
4. Once you see **McDonnell Angus Bulls of the Bighorns**, click **GET APPROVED TO BID** for absentee and live bidding.
5. Please enter your information in the form. Depending on the auctioneer, different information may be requested. Click **I AGREE TO SALE TERMS AND CONDITIONS**.

Congratulations! You are now approved for the auction. Now that you're approved you can participate in the auction and bid on its items.

6. Login on **April 20, 2024** with the credentials you provided at registration.

BROADCAST LIVE ON WWW.FRONTIERLIVESALE.COM

Call 866-313-0123 for technical help.

INDEX BY SIRE

Bulls **WILL NOT** sell in Lot Order – Sale Order will be available on April 19th on our website, Facebook & Frontier Live Sales.

MCD Effective 789.....	Lot # 300 - 302
MCD Effective 031.....	Lot # 303 - 312
GM Capitalist 105.....	Lot # 313 - 315
AB'LVS Capitalist 4507.....	Lot # 316
Sitz Resilient 10208.....	Lot # 317 & 318
Hoffman Thedford.....	Lot # 319 & 320
Marda Big Valley 180.....	Lot # 321 & 322
Byergo Jet Black H25.....	Lot # 323 & 324
GM Comrade 0100.....	Lot # 325
SAV America.....	Lot # 326
Myers Fair-N-Square.....	Lot # 327
SAV Rainfall 6846.....	Lot # 328
GAR Kansas.....	Lot # 329 - 331
Granger Black Eagle 822.....	Lot # 332 & 333
Hamilton Charm.....	Lot # 336 - 342
MCD Epic 059.....	Lot # 343 - 347
Commercial.....	Lot # 348 & 349

REFERENCE SIRES

MYERS FAIR-N-SQUARE M39

DOB: 01/07/2019 Reg # 19418329 Tattoo: M39

CONNEALY ONWARD
SITZ UPWARD 307R
SITZ HENRIETTA PRIDE 81M

SITZ ALLIANCE 6595
MYTTY COUNTESS 906
BALDRIDGE COUNTESS 357

CED	BW	WW	YW	MILK	MARB	RE	\$W	\$B
5	2.0	78	132	23	.94	.87	69	166

- Fair-N-Square is unique for his balanced length and depth of body, with impressive volume, performance and quality. His toe shape and heel depth are as good as it gets, and his pedigree is full of dams that bred first-service A.I. for many years. His pedigree has proven to be efficient as 4 of the 6 sons on test at MBT in 2023 have all proven to be Negative RFI.



HOFFMAN THEDFORD

DOB: 01/28/2020 Reg # 19820180 Tattoo: 0061

CONNEALY BLACK GRANITE
BAR R JET BLACK 5063
BAR R IRIS ANITA 0113

KG SOLUTION 0018
HA RITO LADY 3839
HA RITO LADY 0622

CED	BW	WW	YW	MILK	MARB	RE	\$W	\$B
14	-.5	84	155	35	.57	.99	87	192

- A Jet Black son out of Dave Hinman's top cow HA Rito Lady 3839. He is the highest Heifer Pregnancy Jet Black son in the breed and his progeny are doing well on the feed efficiency tests. Excellent feet and structure. He is also in the top 2% of breed for \$Maternal.



BYERGO JET BLACK H25

DOB: 02/23/2020 Reg # 19824699 Tattoo: H25

COLEMAN CHARLO 0256
S A V RAINFALL 6846
S A V BLACKCAP MAY 4136

LD EMBLAZON 999
BYERGO CLOVER 801
BYERGO CLOVER 150

CED	BW	WW	YW	MILK	MARB	RE	\$W	\$B
12	-.2	78	137	22	.29	.61	68	146

- He was one of the high efficiency bulls out of the 2021 Midland Test. He was purchased by MJB Angus of Lodge Grass, MT and Hone Angus of Gardnerville, NV. He is a moderate framed, long bodied bull with a very nice uddered and teated mother. His progeny exhibits early maturity, great feet and legs, and have now done very well on 3 different efficiency tests. He also works very well on heifers and has a great disposition.



G A R KANSAS

DOB: 08/25/2018 Reg # 19266637 Tattoo: 6528

G A R EARLY BIRD
G A R ASHLAND
CHAIR ROCK AMBUSH 1018

G A R MOMENTUM
CHAIR ROCK MOMENTUM 6057
CHAIR ROCK SURE FIRE 4060

CED	BW	WW	YW	MILK	MARB	RE	\$W	\$B
14	-.2	71	129	25	1.69	1.17	66	217

- Kansas is a highly used for his superior calving ease, disciplined stature, and remarkable blend of marbling and ribeye. His first calves solidified his place as a heifer bull and were admired for their rapid early growth, body capacity, and muscle expression.



REFERENCE SIRES



S A V AMERICA 8018

DOB: 01/31/2018 Reg # 19249580 Tattoo: 8018

COLEMAN CHARLO 0256 S A F 598 BANDO 5175
S A V PRESIDENT 6847 S A V MADAME PRIDE 0075
 S A V BLACKCAP MAY 4136 S A V MADAME PRIDE 8264

CED	BW	WW	YW	MILK	MARB	RE	\$W	\$B
-1	4.8	80	134	16	.47	.94	54	144

- The all time high selling bull out of Schaff Angus Valley in North Dakota. His dam is SAV Madame Pride 0075 and she stayed in the Schaff herd until she was 20 years old.



MCD EFFECTIVE 789

DOB: 03/08/2017 Reg # 18952013 Tattoo: 789

CONNEALY CAPITALIST 028 WILLEKES CONVERTER 4402-9
AB-LVS CAPITALIST 4507 MCD PERFORMISS 238
 AB-LVS EMMA 096 313 PERFORMISS 006

CED	BW	WW	YW	MILK	MARB	RE	\$W	\$B
6	1.7	65	123	25	1.20	.48	54	199

- One of our top efficiency bulls in our 2018 sale with an RFI of -3.57. He came of test at 1247 lbs. with a feed conversion of 4.9 lbs. feed/lb. of gain. His mother has been one of our top producing cows. "789" calves show a lot of thickness and shape to their ribs with his sons being the most popular sire group the last 2 years at our sales. The daughters, much like his sire have nice udders and small teats and a great breed back. 789 now ranks in the top 2% for RFI of all breeds in the Vytelle/GrowSafe data base, which is the largest feed intake data base in North America. Top 15% for combined foot score



GRANGER BLACK EAGLE 822

DOB: 02/09/2018 Reg # 19213529 Tattoo: 822

GRANGER GREAT FALLS 053 GRANGER BLACK CEDAR 150
GRANGER GREAT FALLS 630 GRANGER PRIDE RACHEL 685
 GRNAGER PRIDE RACHEL 890 GRANGER PRIDE RACHEL 420

CED	BW	WW	YW	MILK	MARB	RE	\$W	\$B
6	2.3	81	144	27	.25	.60	70	127

- A HIGH EFFICIENCY bull out of the 2019 Midland Bull Test. A negative RFI with an efficiency ratio of 108,116 Rib Eye ratio and a 109 IMF Ratio. His maternal lines on the top and bottom are great. He is going to b+e a cow-maker. You can expect him to add capacity, bone, foot structure and udder quality. A true high performance sire with good foot structure, big bone, wide topped with a lot of style... is also in top 10% of Angus for PAP.

S A V RAINFALL 6846

DOB: 01/09/2016 Reg # 18578963 Tattoo: 6846

O C C PAXTON 730P S A V 8180 TRAVELER 004
COLEMAN CHARLO 0256 S A V BLACKCAP MAY 4136
 BOHI ABIGALE 6014 S A V MAY 2397

CED	BW	WW	YW	MILK	MARB	RE	\$W	\$B
8	.4	55	107	26	.63	.64	64	119

- A High RFI sire who is in the top 15% of all breeds for RFI and top 16% for low intake while still maintaining a respectable WW EPD and YW EPD of +108. With today's feed costs, feed and pasture efficiency is easily 5 times more important to your bottom line than adding more growth. Rainfall is in the top 20% of angus sires for Heifer Pregnancy, top 10% for combined foot score, and top 3% for \$Maternal. Beautiful uddered and teated females. now ranks in top 6% for RFI of all breeds

HAMILTON CHARM

DOB: 01/28/20 Reg # 19888269 Tattoo: 1160

SILVEIRAS CONVERSION 8064 BASIN PAYWEIGHT 1682
BUBS SOUTHERN CHARM AA31 SHAW LADY PAYWEIGHT 6059
 HICKORY HILL ERICA 009 SHAW LADY UPWARD 1186Y

CED	BW	WW	YW	MILK	MARB	RE	\$W	\$B
3	3.2	75	129	27	.46	0.32	67	128

- An exceptional Southern Charm son that came of of the 2021 Midland Sale. The Champion High Efficiency in Group 1 at Midland in 2021. A very nice bull with a log of shape, thickness and great feet. First set of calves out of this bull have hit the ground running and are already catching eyes.



300 GM EFFECTIVE 300
 DOB: 02/23/23 Reg # 20892239 Tattoo: 300

AB-LVS CAPITALIST 4507
 MCD EFFECTIVE 789
 MCD PERFORMISS 238

CONNEALY CAPITALIST 028
 AB-LVS EMMA 096
 WILLEKES CONVERTER 4402-9
 313 PERFORMISS 006

TM CASH 516
 MCD-9 LADY 711
 MCD LADY 178 229

BARSTOW CASH
 MSU ELBA 002
 BASIN YELLOWSTONE R178
 WILLEKES LADY 178 OF 440

CED	BW	WW	YW	MILK	MARB	RE	\$W	\$B
6	1.0	56	109	26	.62	.24	47	131

ACT. BW	ADJ. WW	WWR	SCROTAL	RFI EPD	GS EPD
80	588	93	37	-0.13	.03

302 GM EFFECTIVE 302
 DOB: 02/25/23 Reg # 20877749 Tattoo: 302

AB-LVS CAPITALIST 4507
 MCD EFFECTIVE 789
 MCD PERFORMISS 238

CONNEALY CAPITALIST 028
 AB-LVS EMMA 096
 WILLEKES CONVERTER 4402-9
 313 PERFORMISS 006

C C A UNO 049
 MCD-1 EILEEN 325
 BLEVINS EILEEN DESTINE 9620

SITZ UPWARD 307R
 MYTTY COUNTESS 906
 G A R PREDESTINED
 BLEVINS EILEEN ENHANCER 3476

CED	BW	WW	YW	MILK	MARB	RE	\$W	\$B
9	0.7	48	85	35	.92	.31	62	150

ACT. BW	ADJ. WW	WWR	SCROTAL	RFI EPD	GS EPD
80	664	105	40	-0.62	-.13

301 GM EFFECTIVE 301
 DOB: 02/22/23 Reg # 20877748 Tattoo: 301

AB-LVS CAPITALIST 4507
 MCD EFFECTIVE 789
 MCD PERFORMISS 238

CONNEALY CAPITALIST 028
 AB-LVS EMMA 096
 WILLEKES CONVERTER 4402-9
 313 PERFORMISS 006

BUBS SOUTHERN CHARM AA31
 GM 2-3 LOIS 193
 4402-9
 MCD -3 QUEEN LOIS 564

SILVEIRAS CONVERSION 8064
 HICKORY HILL ERICA 009
 WILLEKES CONVERTER
 LEMAR QUEEN LOIS 97Y

CED	BW	WW	YW	MILK	MARB	RE	\$W	\$B
6	1.9	75	133	27	.78	.62	67	175

ACT. BW	ADJ. WW	WWR	SCROTAL	RFI EPD	GS EPD
76	567	90	36	NA	NA

303 GM EFFECTIVE 303
 DOB: 03/02/23 Reg # 20817270 Tattoo: 303

MCD EFFECTIVE 789
 MCD EFFECTIVE 031
 O A BLACKBIRD RITA 202

AB-LVS CAPITALIST 4507
 MCD PERFORMISS 238
 S A V MUSTANG 9134
 O A BLACKBIRD RITO 502

PE PIONEER 579
 DEEP CREEK BECCA DC 280
 DEEP CREEK BECCA DC 141

SD PIONEER 2062
 UCC MISS THUNDER 202
 SCHURRTOP AMERICAN 5846
 A C B DP CR CATRINA 502

CED	BW	WW	YW	MILK	MARB	RE	\$W	\$B
2	2.8	59	108	34	.67	.57	54	157

ACT. BW	ADJ. WW	WWR	SCROTAL	RFI EPD	GS EPD
78	662	107	36	1.50	-.01

RFI IS 38-40% HERITABILITY, WHICH IS HIGH IN PRODUCTION TRAITS. RESEARCH HAS CONTINUALLY PROVEN THAT THERE IS 90% CORRELATION BETWEEN HOW A TESTED BULL DOES AND HOW HIS DAUGHTERS DO.



306

GM EFFECTIVE 306

DOB: 03/08/23

Reg # 20817155

Tattoo: 306

MCD EFFECTIVE 789
MCD EFFECTIVE 031
O A BLACKBIRD RITA 202

AB-LVS CAPITALIST 4507
MCD PERFORMISS 238
S A V MUSTANG 9134
O A BLACKBIRD RITO 502

CAMPBELL FRONTMAN 85
DEEP CREEK MINNIE 450
DEEP CREEK MINNIE 58

A A R FRONTMAN 6073
A A R BLACKBIRD 6021
KMR REBEL 1073
DEEP CREEK MINNIE 62

CED	BW	WW	YW	MILK	MARB	RE	\$W	\$B
6	1.7	63	107	27			57	
ACT. BW	ADJ. WW	WWR	SCROTAL	RFI EPD	GS EPD			
76	652	106		NA	NA			

304

GM EFFECTIVE 304

DOB: 03/04/23

Reg # 20817261

Tattoo: 304

MCD EFFECTIVE 789
MCD EFFECTIVE 031
O A BLACKBIRD RITA 202

AB-LVS CAPITALIST 4507
MCD PERFORMISS 238
S A V MUSTANG 9134
O A BLACKBIRD RITO 502

C C A UNO 049
DEEP CREEK EILEEN UNO DC 209
DEEP CREEK EILEEN D C 142

SITZ UPWARD 307R
MYTTY COUNTESS 906
SCHURRTOP AMERICAN 5846
A C B DP CR SUPER EILEEN 22

CED	BW	WW	YW	MILK	MARB	RE	\$W	\$B
7	0.8	58	109	31	.74	.43	59	142
ACT. BW	ADJ. WW	WWR	SCROTAL	RFI EPD	GS EPD			
80	656	106	38	-0.53	-1.2			

307

GM EFFECTIVE 307

DOB: 03/08/23

Reg # 20817268

Tattoo: 307

MCD EFFECTIVE 789
MCD EFFECTIVE 031
O A BLACKBIRD RITA 202

AB-LVS CAPITALIST 4507
MCD PERFORMISS 238
S A V MUSTANG 9134
O A BLACKBIRD RITO 502

PE PIONEER 579
DEEP CREEK SIERRA DC 260
DEEP CREEK SHAWNEE D C 402

SD PIONEER 2062
UCC MISS THUNDER 202
K J R IMAGE MAKER 9727
DEEP CREEK SHAWNEE D C 630

CED	BW	WW	YW	MILK	MARB	RE	\$W	\$B
8	1.3	60	111	32	.92	.67	64	173
ACT. BW	ADJ. WW	WWR	SCROTAL	RFI EPD	GS EPD			
82	667	108	35	0.77	-0.7			

305

GM EFFECTIVE 305

DOB: 03/07/23

Reg # 20817151

Tattoo: 305

MCD EFFECTIVE 789
MCD EFFECTIVE 031
O A BLACKBIRD RITA 202

AB-LVS CAPITALIST 4507
MCD PERFORMISS 238
S A V MUSTANG 9134
O A BLACKBIRD RITO 502

SCHURRTOP AMERICAN 5846
DEEP CRK PATRIOT AMERICAN 15
DEEP CREEK PATRIOT LADY 128

SCHURRTOP M C
SCHURR 77 MARIAS 598 1889
K M R KOLT 173
DEEP CREEK PATRIOT LADY 435

CED	BW	WW	YW	MILK	MARB	RE	\$W	\$B
-1	3.4	57	100	27	.70	.71	49	144
ACT. BW	ADJ. WW	WWR	SCROTAL	RFI EPD	GS EPD			
77	697	113	38	7.61	.41			



Leo, Scott & Bob Videeing Bulls



VICTOR GONI
307-217-0735

LEO MCDONNELL
406-780-0176

SAM FRASER
406-860-0590

SCOTT FRASER
406-860-6548



308 GM EFFECTIVE 308
 DOB: 03/13/23 Reg # 20817275 Tattoo: 308

MCD EFFECTIVE 789
 MCD EFFECTIVE 031
 O A BLACKBIRD RITA 202

AB-LVS CAPITALIST 4507
 MCD PERFORMISS 238
 S A V MUSTANG 9134
 O A BLACKBIRD RITO 502

HARB RESOURCE 116
 DEEP CREEK MAXI CIRCLE DC298
 DEEP CREEK MAXI CIRCLE DC504

S A V RESOURCE 1441
 H A R B LADY CAMILLIA 802
 SCHURRTOP AMERICAN 5846
 DEEP CREEK MAXI CIRCLE DC623

CED	BW	WW	YW	MILK	MARB	RE	\$W	\$B
7	1.0	59	111	35	.84	.27	60	137

ACT. BW	ADJ. WW	WWR	SCROTAL	RFI EPD	GS EPD
78	713	116	35	6.79	.42



312 GM EFFECTIVE 312
 DOB: 04/13/23 Reg # 20817295 Tattoo: 312

MCD EFFECTIVE 789
 MCD EFFECTIVE 031
 O A BLACKBIRD RITA 202

AB-LVS CAPITALIST 4507
 MCD PERFORMISS 238
 S A V MUSTANG 9134
 O A BLACKBIRD RITO 502

PE PIONEER 579
 DEEP CREEK SHAWNEE DC 429
 DEEP CREEK SHAWNEE DC 123

SD PIONEER 2062
 UCC MISS THUNDER 202
 C C A UNO 049
 DEEP CREEK SHAWNEE DC 180

CED	BW	WW	YW	MILK	MARB	RE	\$W	\$B
4	1.1	53	100	32	.52	.24	54	139

ACT. BW	ADJ. WW	WWR	SCROTAL	RFI EPD	GS EPD
80	722	117	34	-2.60	-.36

311 GM EFFECTIVE 311
 DOB: 03/18/23 Reg # 20817165 Tattoo: 311

MCD EFFECTIVE 789
 MCD EFFECTIVE 031
 O A BLACKBIRD RITA 202

AB-LVS CAPITALIST 4507
 MCD PERFORMISS 238
 S A V MUSTANG 9134
 O A BLACKBIRD RITO 502

DUTCH FLAT BRUISER F106
 DEEP CREEK ERICA DC 60
 DEEP CREEK ERICA D C 102

S A V BRUISER 9164
 DUTCH FLAT WESTERN 1713
 SCHURRTOP AMERICAN 5846
 DEEP CREEK ERICA D C 143

CED	BW	WW	YW	MILK	MARB	RE	\$W	\$B
6	0.0	46	89	36	.75	.76	54	146

ACT. BW	ADJ. WW	WWR	SCROTAL	RFI EPD	GS EPD
78	713	116	34	-1.72	-.38

313 GM CAPITALIST 313
 DOB: 03/12/23 Reg # 20886502 Tattoo: 313

GM CAPITALIST 105
 MCD-1 BLACKBIRD RITA 644

AB-LVS CAPITALIST 4507
 CONNEALY CAPITALIST 028
 AB-LVS EMMA 096
 C C A UNO 049
 O A BLACKBIRD RITA 202

SCHAFFER 21C OF 514 1005
 MCD -2 QUEEN ELBA 505
 LEMAR QUEEN ELBA 377Y

SCHAFFER 21ST CENTURY
 CHASE 878 LADY BANDO 07-514
 L A PACKER 78
 LEMAR QUEEN ELBA 777T

CED	BW	WW	YW	MILK	MARB	RE	\$W	\$B
0	4.4	64	117	22	.44	.61	49	140

ACT. BW	ADJ. WW	WWR	SCROTAL	RFI EPD	GS EPD
87	646	102	37	-1.26	.00



Preconditioning and Weaning

314 GM CAPITALIST 314
 DOB: 03/17/23 Reg # 20879101 Tattoo: 314

GM CAPITALIST 105
 MCD-1 BLACKBIRD RITA 644

AB-LVS CAPITALIST 4507
 CONNEALY CAPITALIST 028
 AB-LVS EMMA 096
 C C A UNO 049
 O A BLACKBIRD RITA 202

C C A UNO 049
 MCD-1 MISS RITO 693
 MISS RITO 8503

SITZ UPWARD 307R
 MYTTY COUNTESS 906
 B C MID EMBLAZON 854E 702
 MS RITO 785 OF 4L J906

CED	BW	WW	YW	MILK	MARB	RE	\$W	\$B
8	1.1	63	98	27	.34	.52	70	108

ACT. BW	ADJ. WW	WWR	SCROTAL	RFI EPD	GS EPD
84	707	112	37	0.18	.13

Tried something new this year and tested these bulls @ Midland Bull Test in single group with 4 Registered Breeders that all have a program focused on efficiency and have been using RFI as a selection priority for several years. The group weighed off on February 21, 2024. GrowSafe RFI EPD is a comparison of animals only within the Growsafe Database. The AAA RFI is a comparison of all animals within the American Angus database. A negative # on either (GS, RFI or AAA) being the more efficient bulls in comparison.

333 was the Top Efficiency Bull Overall
 2 Scored in the Top 5% - 5 in the Top 10% - 12 in the Top 25% & 23 in the Top 50%
 Proven Progress & A source of Real Pride in our Program (especially given the competition)

NOTE: AAA data was not available by the time the catalog was printed and will be available as a supplement April 10th online as well as sale day.

TAG	NAME	SIRE	DOB	Finish WT (lbs) 2-21-2024	ADG	AVG DMI (lbs/day)	Feed Conv	RFI	DMI EPD	GrowSafe RFI EPD	AAA RFI
300	GM Effective 300	McD Effective 789	02/23/23	1035	4.14	24.38	5.88	-0.13	0.02	0.03	
302	GM Effective 302	McD Effective 789	02/25/23	1094	4.37	25.18	5.76	-0.62	-0.14	-0.13	
303	GM Effective 303	MCD Effective 031	03/02/23	994	4.56	25.53	5.59	1.50	-0.01	-0.01	
304	GM Effective 304	MCD Effective 031	03/04/23	1091	4.98	25.64	5.14	-0.53	-0.13	-0.12	
305	GM Effective 305	MCD Effective 031	03/07/23	1077	4.94	33.47	6.78	7.61	0.46	0.41	
307	GM Effective 307	MCD Effective 031	03/08/23	998	4.56	24.89	5.44	0.77	-0.08	-0.07	
308	GM Effective 308	MCD Effective 031	03/13/23	1022	4.61	31.37	6.82	6.79	0.47	0.42	
311	GM Effective 311	MCD Effective 031	03/18/23	887	3.24	19.29	5.97	-1.72	-0.53	-0.38	
312	GM Effective 312	MCD Effective 031	04/13/23	896	3.81	19.00	4.97	-2.60	-0.45	-0.36	
313	GM Capitalist 313	GM Capitalist 105	03/12/23	1041	4.10	23.32	5.70	-1.26	0.01	0.00	
314	GM Capitalist 314	GM Capitalist 105	03/17/23	995	4.10	23.90	5.82	0.18	0.07	0.13	
315	GM Capitalist 315	GM Capitalist 105	03/13/23	958	4.76	25.86	5.44	2.40	0.32	0.30	
316	GM Capitalist 316	AB-LVS Capitalist 4507	02/25/23	956	4.78	22.73	4.74	-0.73	0.11	0.05	
317	GM Resilient 317	Sitz Resilient 10208	02/20/23	1104	4.76	23.74	4.98	-2.51	-0.13	-0.22	
318	GM Resilient 318	Sitz Resilient 10208	02/24/23	945	4.25	22.42	5.26	-0.44	0.00	-0.05	
319	GM Thedford 319	Hoffman Thedford	02/25/23	958	4.32	19.29	4.47	-3.86	-0.33	-0.39	
320	GM Thedford 320	Hoffman Thedford	02/25/23	1090	4.92	26.50	5.39	0.40	0.21	0.12	
321	GM Big Valley 321	Marda Big Valley 180	03/03/23	1045	3.68	24.80	6.72	0.42	0.16	0.14	
322	GM Big Valley 322	Marda Big Valley 180	02/22/23	962	3.97	23.48	5.91	0.49	0.05	0.08	
323	GM Jet Black 323	Byergo Jet Black H25	02/27/23	1172	4.78	26.65	5.56	-0.88	0.04	-0.04	
324	GM Jet Black 324	Byergo Jet Black H25	02/24/23	958	4.01	21.87	5.45	-1.08	-0.15	-0.13	
325	GM Comrade 325	GM Comrade 0100	03/20/23	1112	4.74	25.20	5.33	-1.17	-0.28	-0.19	
326	GM Merica 326	S A V America 8018	02/23/23	1114	4.72	25.00	5.29	-1.41	-0.11	-0.06	
327	GM Confidence 327	Myers Fair-N-Square M39	02/21/23	1094	4.48	29.08	6.48	3.20	0.16	0.19	
328	GM Rainfall 328	S A V Rainfall 6846	02/25/23	995	4.30	21.58	5.02	-2.27	-0.35	-0.21	
329	GM Kansas 329	G A R Kansas	02/22/23	1019	4.30	22.82	5.30	-1.52	0.01	-0.02	
330	GM Kansas 330	G A R Kansas	02/20/23	1034	3.88	22.20	5.71	-2.14	-0.16	-0.21	
331	GM Kansas 331	G A R Kansas	02/25/23	1016	4.54	24.82	5.47	0.40	0.33	0.22	
332	GM Black Eagle 332	Granger Black Eagle 822	02/25/23	1241	4.87	28.64	5.88	-0.22	0.19	0.01	
333	GM Black Eagle 333	Granger Black Eagle 822	02/22/23	1173	4.59	23.39	5.10	-4.01	-0.16	-0.26	
335	GM Charm 335	Hamilton Charm	04/05/23	915	3.79	21.41	5.63	-0.55	-0.09	-0.06	
336	GM Charm 336	Hamilton Charm	03/23/23	930	3.70	21.08	5.68	-1.12	-0.03	-0.03	
337	GM Charm 337	Hamilton Charm	03/20/23	1045	4.17	23.68	5.69	-1.04	0.02	0.01	
338	GM Charm 338	Hamilton Charm	04/07/23	1093	4.81	25.90	5.39	-0.15	0.22	0.17	
339	GM Charm 339	Hamilton Charm	03/29/23	975	4.50	23.90	5.32	0.29	0.09	0.07	
340	GM Charm 340	Hamilton Charm	03/20/23	992	4.39	20.86	4.75	-3.00	-0.11	-0.10	
341	GM Charm 341	Hamilton Charm	03/29/23	965	3.62	22.64	6.27	-0.15	0.05	0.06	
342	GM Charm 342	Hamilton Charm	03/18/23	1015	4.17	29.59	7.11	5.45	0.58	0.49	
343	GM Epic 343	MCD Epic 059	03/05/23	1003	4.70	22.91	4.88	-1.37	-0.20	-0.30	
344	GM Epic 344	MCD Epic 059	03/07/23	1010	4.14	22.29	5.37	-1.74	-0.37	-0.40	
346	GM Epic 346	MCD Epic 059	03/17/23	1029	4.92	26.28	5.35	1.34	-0.03	-0.15	
347	GM Epic 347	MCD Epic 059	04/03/23	1087	5.18	25.97	5.00	-0.26	-0.24	-0.34	
348	Commercial	Commercial	03/03/23	1102	4.76	23.68	4.96	-2.54	-0.13	-0.17	
349	Commercial	Hamilton Charm	04/17/23	835	4.08	24.43	6.00	3.88	0.41	0.41	

RFI (RESIDUAL FEED INTAKE) (LBS/DAY)

The amount of feed intake an animal consumes daily, above or below its maintenance requirements as well as its performance (growth) requirements. **A negative RFI is a more efficient bull.**

Example: -2.0 means the bull ate 2 lbs. less feed per day than he needed to meet his body maintenance requirements and production needs (ADG). With today's feed costs, that is a savings of .40 cents/day or \$72.00 per feeding period. The difference between a -2.0 and a +2.0 bull is \$144.00 in the feedlot.

If you are keeping replacement females, by selecting for negative RFI, research has shown you have the potential to save close to \$60.00 per year on cow maintenance costs, and over \$100/cow in time by stacking generations of Efficiency genetics in your herd.

UNDERSTANDING EFFICIENCY AND RFI

Historically, the weight of an animal has been the most important component in determining value, which follows closely with production being the most heavily promoted and taught value in agriculture. **However**, when you consider that more than 75% of the cost of growing cattle is related to feed inputs, and that 70-75% of the feed consumed by cattle is solely for maintenance requirements, then the importance of improving the efficiency of feed intake becomes very real. With today's feed prices and narrow profit margins, improving a herd's efficiency of feed and pasture offers the greatest opportunity to improve Net Returns.



QUESTIONS AND ANSWERS

- **What is the heritability of RFI (Residual Feed Intake)?**
0.38-0.40 (Moderately to highly heritable).
- **How is RFI calculated?**
RFI is looking at what the feed intake requirement is for maintenance for the individual bulls and then what the feed intake requirements are for production (each individual bull's ADG) and compares that to what the individual bull actually consumes.
- **What is Feed Conversion?**
Feed Conversion is the pounds of feed on a dry matter basis required for one pound of gain.
- **What is DMI (Dry Matter Intake)?**
DMI, is the average daily feed intake on a dry matter basis.
- **How much difference can one expect to find in cattle?**
Research from Australia, Canada, and the U.S. have consistently found differences of up to 30%. Our first test group of 400 here at Midland, we found up to 40% variance.
- **If you have two cows weighing 1300 lbs and one produces 15 pounds of milk and the other 20 pounds of milk, wouldn't the other cow at 15 lbs require less feed?**
No, and it could just as well be that the 15 lbs. milk producer is a larger consumer of feed which compounds her inefficiency on both feed intake and lower production. That's the importance of measuring RFI. This is a case where size doesn't matter.
- **What should one be aware of when using RFI?**
First and most importantly, efficiency needs to be balanced with production and profitability. Low Intake with low production is no more cost effective than the high production and low efficiency.
- **Why can't we just use our eye and pick the more moderate, easy-fleshing cow?**
Don't confuse size or fleshing ease with efficient productive cattle. Contrary, to what some folks believe, RFI is not related to frame size, body type, or body condition. You'll find as many inefficient cows in any frame size and just because they look fat and easy-going doesn't mean they're efficient – it just means they're a fat cow.

WHAT DOES THE RESEARCH SAY ?

- Efficiency is highly related to profit and growth is the traditional method of measuring efficiency. The problem is that using growth as a measure of efficiency also increase the size of the animal, which will increase maintenance requirements (70-75% of feed consumed goes toward maintenance requirements), which will increase appetite, which will increase the need for available feeds/grasses.
- Using RFI will lead to improvements in feed efficiency without compounding the need for additional feeds or increasing mature size in your cow herd.
- RFI allows you to produce at a level that optimizes on one's management and environment instead of stressing it.
- RFI is a highly heritable trait, meaning that through genetic identification and then selection, one can make rapid improvements.
- RFI research has shown that improvement in efficiency can be made by as much as 25%.
- Selecting for efficiency will allow the cattle industry to become more competitive in production with swine and chicken.
- Research has shown there is a 0.90 correlation (very high) between bulls measured for RFI postweaning and how their daughters will perform for efficiency in the cowherd.

315 **GM CAPITALIST 315**
 DOB: 03/13/23 Reg # 20877750 Tattoo: 315

GM CAPITALIST 105
 MCD-1 BLACKBIRD RITA 644

CONNEALY CAPITALIST 028
 AB-LVS EMMA 096
 C C A UNO 049
 O A BLACKBIRD RITA 202

MCD SF TOTAL 1348
 MCD-1-5 BLACKBIRD 6107
 MCD-5 BLACKBIRD 265

TC TOTAL 410
 SF FOREVER LADY 233
 SCHURRTOP RTA BUSINESS
 MID BLACKBIRD 718

CED	BW	WW	YW	MILK	MARB	RE	\$W	\$B
3	2.1	60	104	21	.54	.62	56	136

ACT. BW	ADJ. WW	WWR	SCROTAL	RFI EPD	GS EPD
85	584	92	36	2.40	.30



316 **GM CAPITALIST 316**
 DOB: 02/25/23 Reg # 20886501 Tattoo: 316

AB-LVS CAPITALIST 4507
 AB-LVS EMMA 096

S A V FINAL ANSWER 0035
 PRIDES PITA OF CONANGA 8821
 WMR TIMELESS 458
 OX BOW EMMA E396

MCD-1-2 BASIN PAYWEIGHT 1682
 LASS 802
 MCD-2 LASS 626

BASIN PAYWEIGHT 0065
 21AR O LASS 7017
 RS SURVEYOR 1422
 MCD LASS 953

CED	BW	WW	YW	MILK	MARB	RE	\$W	\$B
2	2.1	71	125	23	.51	.48	65	151

ACT. BW	ADJ. WW	WWR	SCROTAL	RFI EPD	GS EPD
83	573	91	37	-0.73	.05

319 **GM THEDFORD 319**
 DOB: 02/25/23 Reg # 20879721 Tattoo: 319

HOFFMAN BAR R JET BLACK 5063
 THEDFORD HA RITO LADY 3839

CONNEALY BLACK GRANITE
 BAR R IRIS ANITA 0113
 KG SOLUTION 0018
 HA RITO LADY 0622

MCD-2-3 V A R RESERVE 1111
 SUNESS 7117
 MCD-3 SUNESS 237

B/R NEW DAY 454
 SANDPOINT BLACKBIRD 8809
 MC D BEAR 037
 SUNESS FA 865

CED	BW	WW	YW	MILK	MARB	RE	\$W	\$B
9	0.4	65	107	30	.21	.61	71	120

ACT. BW	ADJ. WW	WWR	SCROTAL	RFI EPD	GS EPD
75	681	108	37	-3.86	-.39

317 **GM RESILIENT 317**
 DOB: 02/20/23 Reg # 20885078 Tattoo: 317

SITZ RESILIENT 10208
 SITZ MISS BURGESS 1856

MOHNEN SUBSTANTIAL 272
 SITZ PRIDE 200B
 SITZ TOP GAME 561X
 SITZ MISS BURGESS 4381

GM 3-12 CAMPBELL RAINFALL 932
 PERFORMISS 101
 GM -2-2 PERFORMISS 955

S A V RAINFALL 6846
 PROBST MISS BANKROLL 748
 MAR INNOVATION 251
 MCD -2 PERFORMISS 567

CED	BW	WW	YW	MILK	MARB	RE	\$W	\$B
3	1.3	74	131	28	.37	.46	72	127

ACT. BW	ADJ. WW	WWR	SCROTAL	RFI EPD	GS EPD
80	675	107	36	-2.51	-.22



318 **GM RESILIENT 318**
 DOB: 02/24/23 Reg # 20885077 Tattoo: 318

SITZ RESILIENT 10208
 SITZ MISS BURGESS 1856

MOHNEN SUBSTANTIAL 272
 SITZ PRIDE 200B
 SITZ TOP GAME 561X
 SITZ MISS BURGESS 4381

GM 3-5 CAMPBELL RAINFALL 932
 BEAUTY 100
 GM -2-1 BEAUTY 996

S A V RAINFALL 6846
 PROBST MISS BANKROLL 748
 AB-LVS CAPITALIST 4507
 MCD -1 BEAUTY 585

CED	BW	WW	YW	MILK	MARB	RE	\$W	\$B
8	-0.7	64	115	31	.85	.54	71	145

ACT. BW	ADJ. WW	WWR	SCROTAL	RFI EPD	GS EPD
68	609	96	33	-0.44	-.05

320 **GM THEDFORD 320**
 DOB: 02/25/23 Reg # 20892701 Tattoo: 320

HOFFMAN BAR R JET BLACK 5063
 THEDFORD HA RITO LADY 3839

CONNEALY BLACK GRANITE
 BAR R IRIS ANITA 0113
 KG SOLUTION 0018
 HA RITO LADY 0622

MCD -4 SPUR FRANCHISE OF GARTON
 LUCY 520
 MCD LUCY 311

SPUR FRANCHISE 7070
 H&H IRENE LASS 0135
 CONNEALY CONSENSUS 7229
 MCD-3 LUCY 146

CED	BW	WW	YW	MILK	MARB	RE	\$W	\$B
12	-0.3	60	111	35	.47	.79	67	142

ACT. BW	ADJ. WW	WWR	SCROTAL	RFI EPD	GS EPD
81	657	104	38	0.40	.12



321 GM BIG VALLEY 321
 DOB: 03/03/23 Reg # 20882092 Tattoo: 321

CONNEALY BIG VALLEY
 MARD A BIG VALLEY 180
 BBFM 180M UPDATE 684A

CONNEALY DRY VALLEY
 BUNTY LAY OF CONANGA 4930
 TOKACH UPDATE 9009
 BBFM FAMOUS DIVERSITY 180M

MCD-1 BLACKBIRD 444
 SPENCER BLACKBIRD Z261

O C C JUNEAU 807J
 MID AMBUSH 354
 KMK ALLIANCE 6595 187
 MAR BLACKBIRD 6110

CED	BW	WW	YW	MILK	MARB	RE	\$W	\$B
12	-1.6	53	97	24	.78	.51	55	139

ACT. BW	ADJ. WW	WWR	SCROTAL	RFI EPD	GS EPD
74	635	100	39	0.42	.14

323 GM JET BLACK 323
 DOB: 02/27/23 Reg # 20877751 Tattoo: 323

BAR R JET BLACK 5063
 BYERGO JET BLACK H25
 BYERGO CLOVER 801

CONNEALY BLACK GRANITE
 BAR R IRIS ANITA 0113
 LD EMBLAZON 999
 BYERGO CLOVER 150

C C A UNO 049
 MCD-1-5 BLACKBIRD 756
 MCD-5 BLACKBIRD 265

SITZ UPWARD 307R
 MYTTY COUNTESS 906
 SCHURRTOP RTA BUSINESS
 MID BLACKBIRD 718

CED	BW	WW	YW	MILK	MARB	RE	\$W	\$B
7	0.0	63	117	27	.47	.31	64	135

ACT. BW	ADJ. WW	WWR	SCROTAL	RFI EPD	GS EPD
86	661	104	38	-0.88	-.04

322 GM BIG VALLEY 322
 DOB: 02/22/23 Reg # 20895640 Tattoo: 322

CONNEALY BIG VALLEY
 MARD A BIG VALLEY 180
 BBFM 180M UPDATE 684A

CONNEALY DRY VALLEY
 BUNTY LAY OF CONANGA 4930
 TOKACH UPDATE 9009
 BBFM FAMOUS DIVERSITY 180M

ROCK'N D PROFICIENT 2915
 MCD-9 ENCHANTRESS 133
 DUTCH'S ENCHANTRESS 860

RITO 4612 OF RITA 8G23 112
 MISS TRICIA BLACKCAP OF RDR
 RALLY DUTCHMAN 4068
 NEWELLS PERFORMISS 935

CED	BW	WW	YW	MILK	MARB	RE	\$W	\$B
15	-2.4	49	89	33	.74	.32	61	119

ACT. BW	ADJ. WW	WWR	SCROTAL	RFI EPD	GS EPD
82	608	96	36	0.49	.08

324 GM JET BLACK 324
 DOB: 02/24/23 Reg # 20877752 Tattoo: 324

BAR R JET BLACK 5063
 BYERGO JET BLACK H25
 BYERGO CLOVER 801

CONNEALY BLACK GRANITE
 BAR R IRIS ANITA 0113
 LD EMBLAZON 999
 BYERGO CLOVER 150

BUBS SOUTHERN CHARM AA31
 GM 2-1 HUSKETT 191
 MCD-1 HUSKETT 572

SILVEIRAS CONVERSION 8064
 HICKORY HILL ERICA 009
 C C A UNO 049
 HUSKETT PERFORMISS 070

CED	BW	WW	YW	MILK	MARB	RE	\$W	\$B
7	1.8	80	133	31	.41	.45	78	111

ACT. BW	ADJ. WW	WWR	SCROTAL	RFI EPD	GS EPD
77	570	90	34	-1.08	.19

Recently, we measured forage intake on cows that have survived under Arizona ranch conditions at the UA V-V Ranch. The low RFI cows consumed hay at 1.9% of body weight while the high RFI cows consumed hay at 2.4% of BW (20% Difference in feed intake)...suggests that RFI may be useful in selecting cows that survive under arid range conditions.

~ University of Arizona

325**GM COMRADE 325**

DOB: 03/20/23

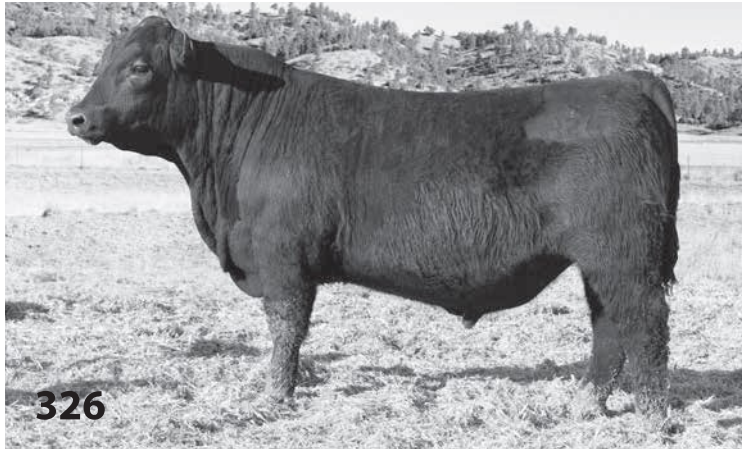
Reg # 20879102

Tattoo: 325

GM COMRADE 7126
MCD COMRADE 0100
MCD-2-1-2 LUCY 810BLEVINS PRIME COMRADE L 5935
MCD MISS RITO 2216
MJB 67C OF 3545 201Z
MCD -1-2 LUCY 549GM 3-13 LUCY 111
RTA BLACK VELVET 42
MCD-1-4 LUCY 820SOO LINE MOTIVE 9016
MISS UPWARD CASEY 244
C C A UNO 049
MCD-4 LUCY 520

CED	BW	WW	YW	MILK	MARB	RE	\$W	\$B
3	2.4	79	143	37	.23	.89	77	135

ACT. BW	ADJ. WW	WWR	SCROTAL	RFI EPD	GS EPD
85	746	118	37	-1.17	-.19

**327****GM CONFIDENCE 327**

DOB: 02/21/23

Reg # 20877753

Tattoo: 327

WOODHILL BLUEPRINT
MYERS FAIR-N-SQUARE M39
MYERS MISS BEAUTY M136CONNEALY CONFIDENCE PLUS
WOODHILL EVERGREEN Z291-B233
CONNEALY THUNDER
MYERS MISS BEAUTY M476IRONWOOD TENDER TEN 1501
MCD -3 LUCY 656
MCD LUCY 903B3R TENDER TEN R065
WARDENS BARB 701 3409
GARRET'S ON TARGET 323C
MID 1148 LUCY 345

CED	BW	WW	YW	MILK	MARB	RE	\$W	\$B
2	3.1	66	110	23	.57	.63	56	128

ACT. BW	ADJ. WW	WWR	SCROTAL	RFI EPD	GS EPD
85	600	95	37	3.20	.16

326**GM MERICA 326**

DOB: 02/23/23

Reg # 20879100

Tattoo: 326

S A V PRESIDENT 6847
S A V AMERICA 8018
S A V MADAME PRIDE 0075COLEMAN CHARLO 0256
S A V BLACKCAP MAY 4136
S A F 598 BANDO 5175
S A V MADAME PRIDE 8264MCD -33-1 LUCY 800
S A V FINAL ANSWER 0035
MCD-1 LUCY 636SITZ TRAVELER 8180
S A V EMULOUS 8145
C C A UNO 049
MID LUCYS 608

CED	BW	WW	YW	MILK	MARB	RE	\$W	\$B
4	1.7	73	125	30	.54	1.04	72	146

ACT. BW	ADJ. WW	WWR	SCROTAL	RFI EPD	GS EPD
80	648	102	34	-1.41	-.11

328**GM RAINFALL 328**

DOB: 02/25/23

Reg # 20881997

Tattoo: 328

S A V RAINFALL 6846
COLEMAN CHARLO 0256
S A V BLACKCAP MAY 4136O C C PAXTON 730P
BOHI ABIGALE 6014
S A V 8180 TRAVELER 004
S A V MAY 2397MCD-2 PERFORMISS 4114
BASIN YELLOWSTONE R178
MID PERFORMISS 625VERMILION YELLOWSTONE
BASIN CAMILLA L868
B C MID EMBLAZON 854E 702
EOLAS PERFORMISS 439

CED	BW	WW	YW	MILK	MARB	RE	\$W	\$B
7	2.2	64	104	19	.66	.88	57	136

ACT. BW	ADJ. WW	WWR	SCROTAL	RFI EPD	GS EPD
82	592	94	35	-2.27	-.21

329**GM KANSAS 329**

DOB: 02/22/23

Reg # 20879696

Tattoo: 329

G A R KANSAS
G A R ASHLAND
CHAIR ROCK MOMENTUM 6057G A R EARLY BIRD
CHAIR ROCK AMBUSH 1018
G A R MOMENTUM
CHAIR ROCK SURE FIRE 4060MCD-3-1 TIMES 601
SPUR FRANCHISE OF GARTON
MCD 1148 TIMES 275SPUR FRANCHISE 7070
H&H IRENE LASS 0135
BASIN YELLOWSTONE R178
MID 1148 TIMES 341

CED	BW	WW	YW	MILK	MARB	RE	\$W	\$B
6	3.2	69	122	34	1.47	.87	65	195

ACT. BW	ADJ. WW	WWR	SCROTAL	RFI EPD	GS EPD
87	697	110	36	-1.52	-.02

*Lam Preg Testing*



331

GM KANSAS 331

DOB: 02/25/23

Reg # 20879699

Tattoo: 331

G A R ASHLAND
G A R KANSAS
CHAIR ROCK MOMENTUM 6057

G A R EARLY BIRD
CHAIR ROCK AMBUSH 1018
G A R MOMENTUM
CHAIR ROCK SURE FIRE 4060

MCD-3 CASHITY 610
PERFORMISS CASHITY 042

MCD SF TOTAL PACKAGE 1337
ENCHANTRESS CEDAR 067
COLE CREEK BLACK CEDAR 46P
MID TRANSFORMISS 048

CED	BW	WW	YW	MILK	MARB	RE	\$W	\$B
7	1.1	68	114	21	.99	.99	66	157
ACT. BW	ADJ. WW	WWR	SCROTAL	RFI EPD	GS EPD			
82	543	86	36	0.40	.22			

330

GM KANSAS 330

DOB: 02/20/23

Reg # 20879693

Tattoo: 330

G A R ASHLAND
G A R KANSAS
CHAIR ROCK MOMENTUM 6057

G A R EARLY BIRD
CHAIR ROCK AMBUSH 1018
G A R MOMENTUM
CHAIR ROCK SURE FIRE 4060

MJB INFINITY 2Y
MCD-4 ERICA 706
MCD ERICA 318

TE MANIA INFINITY 04 379 AB
M J B BLACKBIRD 906W
BCC JAF ABSAROKEE 51Y
BLACKCAP'S ERICA 889

CED	BW	WW	YW	MILK	MARB	RE	\$W	\$B
11	-0.1	66	114	26	.97	.59	66	147
ACT. BW	ADJ. WW	WWR	SCROTAL	RFI EPD	GS EPD			
85	582	92	40	-2.14	-.21			



332

GM BLACK EAGLE 332

DOB: 02/25/23

Reg # 20877754

Tattoo: 332

GRANGER GREAT FALLS 630
GRANGER BLACK EAGLE 822
GRANGER PRIDE RACHEL 685

GRANGER GREAT FALLS 053
GRNAGER PRIDE RACHEL 890
GRANGER BLACK CEDAR 150
GRANGER PRIDE RACHEL 420

SCHAFER 21C OF 514 1005
MCD-2-4 HUSKERET 424
MCD-4 HUSKERET 153

SCHAFER 21ST CENTURY
CHASE 878 LADY BANDO 07-514
WILLEKES CONVERTER 4402-9
MCD HUSKERET 921

CED	BW	WW	YW	MILK	MARB	RE	\$W	\$B
1	3.4	71	128	32	.13	.40	59	121
ACT. BW	ADJ. WW	WWR	SCROTAL	RFI EPD	GS EPD			
85	737	116	41	-0.22	.01			



Victor - Dallas - Leo



VICTOR GONI
307-217-0735

LEO MCDONNELL
406-780-0176

SAM FRASER
406-860-0590

SCOTT FRASER
406-860-6548



333 GM BLACK EAGLE 333
 DOB: 02/22/23 Reg # 20877755 Tattoo: 333

GRANGER GREAT FALLS 630
 GRANGER BLACK EAGLE 822
 GRANGER PRIDE RACHEL 685

GRANGER GREAT FALLS 053
 GRNAGER PRIDE RACHEL 890
 GRANGER BLACK CEDAR 150
 GRANGER PRIDE RACHEL 420

RS SURVEYOR 1422
 MCD-2-9 ENCHANTRESS 687
 MCD BRUN-9 ENCHANTRESS 201

SITZ WISDOM 481T
 RS NEW STANDARD R15 U5
 ROCK'N D PROFICIENT 2915
 BAR ERICA RIGHT TIME 851

CED	BW	WW	YW	MILK	MARB	RE	\$W	\$B
14	-0.5	72	132	38	.56	.49	76	141
ACT. BW	ADJ. WW	WWR	SCROTAL	RFI EPD	GS EPD			
72	660	104	38	-4.01	-26			



337 GM CHARM 337
 DOB: 03/20/23 Reg # 20877758 Tattoo: 337

BUBS SOUTHERN CHARM AA31
 HAMILTON CHARM
 SHAW LADY PAYWEIGHT 6059

SILVEIRAS CONVERSION 8064
 HICKORY HILL ERICA 009
 BASIN PAYWEIGHT 1682
 SHAW LADY UPWARD 1186Y

MCD EFFECTIVE 789
 GM 4-1 EILEEN 099
 MCD EILEEN 345

AB-LVS CAPITALIST 4507
 MCD PERFORMISS 238
 CONNEALY CONSENSUS 7229
 BLEVINS EILEEN PREDEST 9634

CED	BW	WW	YW	MILK	MARB	RE	\$W	\$B
5	1.6	71	114	30	.91	.18	76	126
ACT. BW	ADJ. WW	WWR	SCROTAL	RFI EPD	GS EPD			
79	764	121	40	-1.04	.01			

335 GM CHARM 335
 DOB: 04/05/23 Reg # 20877756 Tattoo: 335

BUBS SOUTHERN CHARM AA31
 HAMILTON CHARM
 SHAW LADY PAYWEIGHT 6059

SILVEIRAS CONVERSION 8064
 HICKORY HILL ERICA 009
 BASIN PAYWEIGHT 1682
 SHAW LADY UPWARD 1186Y

LT CONVERSE 8011
 GM 1-1 PERFORMISS 061
 MCD PERFORMISS 243

CONNEALY CONFIDENCE PLUS
 LT NORDICA 6066
 BASIN YELLOWSTONE R178
 MID PERFORMISS 609

CED	BW	WW	YW	MILK	MARB	RE	\$W	\$B
2	3.7	78	122	29	.87	.21	73	129
ACT. BW	ADJ. WW	WWR	SCROTAL	RFI EPD	GS EPD			
78	767	121	35	-0.55	-06			



Liam Robbins Semen Testing

336 GM CHARM 336
 DOB: 03/23/23 Reg # 20877757 Tattoo: 336

BUBS SOUTHERN CHARM AA31
 HAMILTON CHARM
 SHAW LADY PAYWEIGHT 6059

SILVEIRAS CONVERSION 8064
 HICKORY HILL ERICA 009
 BASIN PAYWEIGHT 1682
 SHAW LADY UPWARD 1186Y

MCD EFFECTIVE 789
 GM 6-2 PERFORMISS 065
 MCD-2 PERFORMISS 426

AB-LVS CAPITALIST 4507
 MCD PERFORMISS 238
 SINCLAIR FORTUNATE SON
 MCD PERFORMISS 940

CED	BW	WW	YW	MILK	MARB	RE	\$W	\$B
6	2.1	73	128	27	.56	.57	66	145
ACT. BW	ADJ. WW	WWR	SCROTAL	RFI EPD	GS EPD			
77	658	104	34	-1.12	-03			

338

GM CHARM 338

DOB: 04/07/23 Reg # 20877759 Tattoo: 338

HAMILTON CHARM
BUBS SOUTHERN CHARM AA31
SHAW LADY PAYWEIGHT 6059

SILVEIRAS CONVERSION 8064
HICKORY HILL ERICA 009
BASIN PAYWEIGHT 1682
SHAW LADY UPWARD 1186Y

MCD 0-3 BLACKBIRD 543
KOU PAL CZECH 158
MCD-3 BLACKBIRD 183

KOU PAL JUNEAU 797
KOU PAL KARAMA 729
OFF POUNDER U831
PERFORMISS 239

CED	BW	WW	YW	MILK	MARB	RE	\$W	\$B
1	4.4	86	156	34	.41	.65	73	165

ACT. BW	ADJ. WW	WWR	SCROTAL	RFI EPD	GS EPD
80	666	105	39	-0.15	.17

341

GM CHARM 341

DOB: 03/29/23 Reg # 20877762 Tattoo: 341

HAMILTON CHARM
BUBS SOUTHERN CHARM AA31
SHAW LADY PAYWEIGHT 6059

SILVEIRAS CONVERSION 8064
HICKORY HILL ERICA 009
BASIN PAYWEIGHT 1682
SHAW LADY UPWARD 1186Y

GM -2-1 NOTCHESS 934
AB-LVS CAPITALIST 4507
MCD -1 NOTCHESS 571

CONNEALY CAPITALIST 028
AB-LVS EMMA 096
C C A UNO 049
MID NOTCHESS 521

CED	BW	WW	YW	MILK	MARB	RE	\$W	\$B
-2	4.2	71	114	20	.48	.76	56	136

ACT. BW	ADJ. WW	WWR	SCROTAL	RFI EPD	GS EPD
84	652	103	40	-0.15	.06

339

GM CHARM 339

DOB: 03/29/23 Reg # 20877760 Tattoo: 339

HAMILTON CHARM
BUBS SOUTHERN CHARM AA31
SHAW LADY PAYWEIGHT 6059

SILVEIRAS CONVERSION 8064
HICKORY HILL ERICA 009
BASIN PAYWEIGHT 1682
SHAW LADY UPWARD 1186Y

MCD -3-2 ERISKAY 814
MJB 67C OF 3545 201Z
MCD -2 ERISKAY 573

MCD SF ANSWER 71 - 3545
MJB JODIE 201Z
SINCLAIR FORTUNATE SON
BLEVINS ERISKAY MISSION 9652

CED	BW	WW	YW	MILK	MARB	RE	\$W	\$B
-6	3.3	67	113	33	.53	.24	71	107

ACT. BW	ADJ. WW	WWR	SCROTAL	RFI EPD	GS EPD
87	563	89	35	0.29	.07

342

GM CHARM 342

DOB: 03/18/23 Reg # 20877763 Tattoo: 342

HAMILTON CHARM
BUBS SOUTHERN CHARM AA31
SHAW LADY PAYWEIGHT 6059

SILVEIRAS CONVERSION 8064
HICKORY HILL ERICA 009
BASIN PAYWEIGHT 1682
SHAW LADY UPWARD 1186Y

GM -2-3 RITOESS 995
AB-LVS CAPITALIST 4507
MCD-3 RITOESS 4112

CONNEALY CAPITALIST 028
AB-LVS EMMA 096
MCD PERFORMER 228
MCD RITOESS 2218

CED	BW	WW	YW	MILK	MARB	RE	\$W	\$B
13	-1.2	61	105	28	.26	.19	68	103

ACT. BW	ADJ. WW	WWR	SCROTAL	RFI EPD	GS EPD
72	645	102	38	5.45	.49



343

GM EPIC 343

DOB: 03/05/23 Reg # 20834322 Tattoo: 343

MCD EPIC 138
ICC EPIC 1429-8257
MCD PERFORMISS 238

3F EPIC 4631
MCATL FOREVER LADY 1429-
WILLEKES CONVERTER 4402-9
313 PERFORMISS 006

DEEP CREEK ANNIE DC 580
HARB RESOURCE 116
DEEP CREEK ANNIE D C 252

S A V RESOURCE 1441
H A R B LADY CAMILLIA 802
KMR FORCE 818
DEEP CREEK ALICE D C 185

CED	BW	WW	YW	MILK	MARB	RE	\$W	\$B
7	0.5	53	94	31	.30	.58	59	119

ACT. BW	ADJ. WW	WWR	SCROTAL	RFI EPD	GS EPD
77	646	105	36	NA	NA

340

GM CHARM 340

DOB: 03/20/23 Reg # 20877761 Tattoo: 340

HAMILTON CHARM
BUBS SOUTHERN CHARM AA31
SHAW LADY PAYWEIGHT 6059

SILVEIRAS CONVERSION 8064
HICKORY HILL ERICA 009
BASIN PAYWEIGHT 1682
SHAW LADY UPWARD 1186Y

GM -2-1 RITA 921
AB-LVS CAPITALIST 4507
MCD -1 BLACKBIRD RITA 559

CONNEALY CAPITALIST 028
AB-LVS EMMA 096
C C A UNO 049
O A BLACKBIRD RITA 202

CED	BW	WW	YW	MILK	MARB	RE	\$W	\$B
7	0.0	61	107	34	.22	.48	71	107

ACT. BW	ADJ. WW	WWR	SCROTAL	RFI EPD	GS EPD
76	650	103	38	-3.00	-.10

344

GM EPIC 344

DOB: 03/07/23 Reg # 20817272 Tattoo: 344

MCD EPIC 138
ICC EPIC 1429-8257
MCD PERFORMISS 238

3F EPIC 4631
MCATL FOREVER LADY 1429-138
WILLEKES CONVERTER 4402-9
313 PERFORMISS 006

DEEP CREEK BARBARA DC 283
KMR FORCE 818
DEEP CREEK BARBARA DC 269

KMR FORCE 2706
KMR FOREVER LADY 826
SCHURRTOP AMERICAN 5846
DEEP CREEK BARBARA D C 65

CED	BW	WW	YW	MILK	MARB	RE	\$W	\$B
10	-0.8	57	109	21	.72	.27	50	142

ACT. BW	ADJ. WW	WWR	SCROTAL	RFI EPD	GS EPD
75	664	108	35	NA	NA



COMMERCIAL

DOB: 03/03/23

Reg # 627433028

Tattoo:

CED	BW	WW	YW	MILK	MARB	RE	\$W	\$B
ACT. BW	ADJ. WW	WWR	SCROTAL	RFI EPD	GS EPD			
82	655		39	-2.54	.20			

346

GM EPIC 346

DOB: 03/17/23

Reg # 20817173

Tattoo: 346

MCD EPIC 059
MCD PERFORMISS 238

SILVER STATE TEN X 310
DEEP CREEK CATRINA D C 168
DEEP CREEK CATRINA D C 22

3F EPIC 4631
MCATL FOREVER LADY 1429-138
WILLEKES CONVERTER 4402-9
313 PERFORMISS 006

A A R TEN X 7008 S A
SILVER STATE QUEEN 564
SCHURRTOP AMERICAN 5846
DEEP CREEK CATRINA D C 415

CED	BW	WW	YW	MILK	MARB	RE	\$W	\$B
9	0.6	71	125	29	.22	.79	73	130
ACT. BW	ADJ. WW	WWR	SCROTAL	RFI EPD	GS EPD			
75	638	104	34	1.34	-.15			



COMMERCIAL

DOB: 04/17/23

Reg # 627351962

Tattoo:

HAMILTON CHARM
BUBS SOUTHERN CHARM AA31
SHAW LADY PAYWEIGHT 6059

GM -2-1 LUCY 990
MCD-1 LUCY 581

SILVEIRAS CONVERSION 8064
HICKORY HILL ERICA 009
BASIN PAYWEIGHT 1682
SHAW LADY UPWARD 1186Y

CONNEALY CAPITALIST 028
AB-LVS EMMA 096
C C A UNO 049
MCD LUCY 903

CED	BW	WW	YW	MILK	MARB	RE	\$W	\$B
0	3.1	72						
ACT. BW	ADJ. WW	WWR	SCROTAL	RFI EPD	GS EPD			
80	647	102	32	3.88	.20			

347

GM EPIC 347

DOB: 04/03/23

Reg # 20817274

Tattoo: 347

MCD EPIC 059
MCD PERFORMISS 238

SCHURRTOP AMERICAN 5846
DEEP CREEK MILIE DC 294
DEEP CREEK MILE DC 251

3F EPIC 4631
MCATL FOREVER LADY 1429-138
WILLEKES CONVERTER 4402-9
313 PERFORMISS 006

SCHURRTOP M C
SCHURR 77 MARIAS 598 1889
PERFORMER 839
DEEP CREEK MARLEE D C 344

CED	BW	WW	YW	MILK	MARB	RE	\$W	\$B
-9	5.7	78	134	26	.37	.67	54	147
ACT. BW	ADJ. WW	WWR	SCROTAL	RFI EPD	GS EPD			
82	740	120	36	-0.26	-.34			



Tater & Ryker



Gavin & Colter Freeze
Branding



Tater



BREEDING FOR PROFIT

79 % of the bulls in this sale above at industry average for \$W.

\$W (weaned calf value) represents 4 primary economic feeder factors: birth weight, weaning weight, maternal milk and nature cow size. If you keep replacement females, \$W is an important factor, as low birth weight, high growth, optimum milk and economical mature size are rewarded in \$W calculations.

If you sell your calves at weaning, a high \$W will have the greatest impact on your bottom line.

*We Appreciate Each
and Every one of our Customers*



*Our
Crew*



EFFICIENCY SEMEN AVAILABLE

MCD EFFECTIVE 789

DOB: 03/08/2017 Reg # 18952013 Tattoo: 789

CONNEALY CAPITALIST 028 WILLEKES CONVERTER 4402-9
AB-LVS CAPITALIST 4507 MCD PERFORMISS 238
 AB-LVS EMMA 096 313 PERFORMISS 006

CED	BW	WW	YW	MILK	MARB	RE	\$W	\$B
6	1.7	65	123	25	1.20	.48	54	199

\$25 SEMEN
 \$35 CERTIFICATE

RFI -3.59



Proven Heifer Bull

GM JACKPOT 144

DOB: 04/01/2021 Reg # 20273239 Tattoo: 144

VISION CASH 3414 C C A UNO 049
BAR CASH 707 JAF MCD -1 NOTCHESS 571
 B A R MAID 215 MID NOTCHESS 521

CED	BW	WW	YW	MILK	MARB	RE	\$W	\$B
-4	4.3	82	143	25	-.12	.99	66	117

\$25 SEMEN
 \$35 CERTIFICATE

RFI -0.26



GRANGER BLACK EAGLE 822

DOB: 02/09/2018 Reg # 19213529 Tattoo: 822

GRANGER GREAT FALLS 053 GRANGER BLACK CEDAR 150
GRANGER GREAT FALLS 630 GRANGER PRIDE RACHEL 685
 GRNAGER PRIDE RACHEL 890 GRANGER PRIDE RACHEL 420

CED	BW	WW	YW	MILK	MARB	RE	\$W	\$B
6	2.3	81	144	27	.25	.60	70	127

\$25 SEMEN
 \$35 CERTIFICATE

RFI -4.93



CAMPBELL RAINFALL 932

DOB: 02/27/2019 Reg # 19609626 Tattoo: 932

COLEMAN CHARLO 0256 BARSTOW BANKROLL B73
S A V RAINFALL 6846 PROBST MISS BANKROLL 748
 S A V BLACKCAP MAY 4136 LEADORE DEENA C732

CED	BW	WW	YW	MILK	MARB	RE	\$W	\$B
6	0	56	109	29	.56	.63	60	138

Campbell Rainfall continues on with the genetic value of SAV Rainfall. He came out of the 2020 Midland Test with an Efficiency ratio of 109. A calving ease bull who is in the top 10% for Heifer Pregnancy, top 15% for Combined Foot Score, top 4% for \$ Maternal with a great ribeye.

\$10 SEMEN
 \$15 CERTIFICATE

RFI -4.83



SIRE: S A V RAINFALL 6846

Proven Heifer Bull

HAMILTON CHARM

DOB: 01/28/20 Reg # 19888269 Tattoo: 1160

SILVEIRAS CONVERSION 8064 BASIN PAYWEIGHT 1682
BUBS SOUTHERN CHARM AA31 SHAW LADY PAYWEIGHT 6059
 HICKORY HILL ERICA 009 SHAW LADY UPWARD 1186Y

CED	BW	WW	YW	MILK	MARB	RE	\$W	\$B
2	2.7	77	130	26	.47	.36	70	129

An exceptional Southern Charm son that came of of the 2021 Midland Sale. The Champion **High Efficiency** in Group 1 at Midland in 2021. A very nice bull with a log of shape, thickness and great feet. First set of calves out of this bull have hit the ground running and are already catching eyes.

\$15 SEMEN
 \$15 CERTIFICATE

RFI -2.62



SIRE: BUBS SOUTHERN CHARM A31

ORDER NOW FOR SPRING BREEDING, CALL LEO OR VICTOR

MCDONNELL ANGUS

The Efficiency Breeders

GM Livestock
Victor and Darcy Goni
PO Box 334 • Buffalo WY 82834

FIRST CLASS MAIL • RETURN SERVICE REQUESTED • DATED MATERIAL



A Legacy PROGRAM
Proven PERFORMANCE DATA
Progressive EFFICIENCY GENETICS

Victor G. Goni 307-217-0735
Leo McDonnell 406-780-0716

Bulls OF THE
BIGHORNS
www.MCDONNELLANGUS.com

PO Box 334 | Buffalo, WY 82834
Email: 307Angus@gmail.com

www.MCDONNELLANGUS.com OR FIND US ON FACEBOOK 