

McDONNELL ANGUS

The Efficiency Breeders

789

Selling

*Performance and
Efficiency Tested*

**REGISTERED YEARLING
ANGUS BULLS**

Bulls OF
THE
BIGHORNS

APRIL 22ND 1:00 PM

**BUFFALO, WYOMING
BUFFALO LIVESTOCK MARKETING**

*We would like to welcome everyone to our
18th Annual spring bull sale.*

Our family has always been involved in performance cattle. Darcy's "Papa Leo" (McDonnell) being one of the founding members of the performance movement when he brought Midland Bull Test to life in the 1960s. Leo McDonnell Jr started McDonnell Angus 50 some years ago under those same principles of measuring cattle for genetic traits that are of economically important to ranchers. Then 15 years ago with an innovated idea he expanded it to including measuring cattle for feed intake and efficiency. Today several of the very top efficient Angus sires in the breed originated from this herd.

In 2018, we were given the opportunity to take over the North Dakota unit and appreciate Leo and Sam's help in getting started. For 18 years the bulls off this unit were tested at Midland Bull Test for performance and efficiency using GrowSafe technology and then sold in May in Bowman, North Dakota. It was always our hope to move back Johnson County and those beautiful Big Horn Mountains, our family made that move last summer and are headquartered now between Buffalo and Kaycee WY.

We want to thank everyone in North Dakota and the surrounding area who helped and supported our program, we will continuing to serve our existing customers and look forward to building new relationship and customers in Wyoming.

The bulls will continue to be developed and tested at Midland Bull Test run by Darcy's brother Steve. and have been semen tested and evaluated for structure, feet and disposition. We hope you can make it to Midland or Buffalo Livestock Market, and have a good look at some of the most respected, proven efficient Angus Bulls in the breed. We are continually impressed with all the great feedback we get from ranchers who have been using our genetics for generations. Ranchers who have been through the droughts and tough winter conditions and how pleased they are with how their cattle thrive with limited feed and rugged environments.

Rest assured this program is built around proven genetic claims, we raise our own females. Our females have the MCD or GM prefix, which ensures generations of feed efficient stacked pedigrees. Our cows are hardy, built to withstand the badlands of North Dakota to Mountains and plains of Montana and Wyoming. We will continue raising cattle with BALANCED traits across the board all while promoting sires that are PROVEN EFFICIENT.

Please don't hesitate to reach out if you have any questions on our program or our cattle. 307-217-0735.



BULL SALE

APRIL 22, 2023

BUFFALO, WYOMING

BUFFALO LIVESTOCK MARKETING

LUNCH AT 11 AM | SALE 1 PM

FRIDAY, APRIL 21

8:00 am Bulls Available
for Viewing

SATURDAY, APRIL 22

8:00 am Bulls Available
for Viewing

11:00 am Lunch is
Served at Buffalo Livestock

1:00 pm Spring Bull Sale

ACCOMMODATIONS

Hampton Inn 307-684-8899

Buffalo Inn 307-684-7000

Holiday Inn 307-684-9900

We look forward to seeing you at the sale!

Vic and Darc



SALE CONTACTS MCDONNELL ANGUS

Leo McDonnell 406-780-0176

Victor Goni 307-217-0735

Darcy Goni 307-217-3437

Email: bulls@mcdonnellangus.com

www.mcdonnellangus.com

FRONTIER LIVE SALE

Scott – 406-860-6548

Sam – 406-860-0590

www.frontierlive.com

see page 6 for details

VIEWING

Bulls can be viewed at Midland Bull Test until April 20th and will be sorted and available for viewing at Buffalo Livestock Marketing beginning April 21st

FIRST BREEDING SEASON GUARANTEE

All bull selling for \$3,000 or more will be covered by 50% by seller if they are injured during the first breeding season. Breeding season is defined as the 60-day period following the first turnout of bulls. 50% of the value of the bull up to \$8000 in purchase cost, minus one-half, will be given as credit in a future McDonnell Angus Sale or towards a replacement bull if one of equal quality is available by seller. All injured bulls must be diagnosed by a veterinarian. Please notify us as soon as possible should an injury occurs and must be prior to the bull being sold for salvage. All claims must be made by September 1 of 2023. The guarantee does not replace mortality insurance and does not cover loss due to death or other natural occurrence or negligence.

AUCTIONEER GREG GOGGINS 406-200-1880

SALES STAFF

MATT WZNICK WESTERN AG REPORTER 406-489-2414

ANDY REST CATTLE BUSINESS WEEKLY 605-670-5678

AUSTIN SNOOK BUFFALO LIVESTOCK MARKETING 307-290-2161

DIRECT BUFFALO LIVESTOCK MARKETING 307-684-0789

SALE TERMS & CONDITIONS – All cattle sell under the terms and conditions of the American Angus Association

DELIVERY - We deliver for FREE up to 300 miles to a central location.

TAKE HOME CREDIT – \$50 credit on any bull that is taken within 2 days.

SIGHT UNSEEN PURCHASE PROGRAM - Satisfaction guaranteed! Orders placed with Leo or Victor come with a sight unseen guarantee, you don't like what we pick out for you we will make it right!


GENETIC DEFECTS – All bulls showing potential for AM, NH, CA or DD have been tested and if positive, removed from sale. No known carriers are selling, unless otherwise noted.

SEMEN INTEREST - McDonnell Angus retains 1/3 semen interest on bulls in the sale. Full possession and salvage value sells on each animal.

HEALTH & NUTRITION

- **HERD HEALTH** – Calves are given Endovac at birth as well as probiotic. Spring turn out they are given Endovac, Inforce 3, Alpha 7 and Pinkeye Vaccine. In the Fall they are given Endovac, Inforce 3, Alpha 7, Express 5, Dectomax, and Fusogard. Fusogard is bolstered again over the winter, and a dose of Multi Min.
- **NUTRITION** – McDonnell Angus maintains a VITAFIRM mineral program year round on our cow herd. The bulls were fed the standard high roughage ration at Midland Bull Test.

DATA

- **SEMEN TESTING** – All bulls selling have passed a breeding soundness exam, fertility test and scrotal measurements performed by Dr. Don Kruger of the Bowman, ND on March 8, 2023.
- **EFFICIENCY** – Bulls test at Midland Bull Test on Growsafe Systems
- **GENESEK** – All bulls have been Gnomics tested on the  Powered by Nogen GenSeek
- **EPDs** provided are current as of March 21, 2023.

SUPPLEMENT INFORMATION

Available on website as well as sale day with additional scrotal measurements as well as any other updates. Announcement made from the auction block will take precedence over information in this catalog.

We are so fortunate to have the friends and neighbors that we do. From cleaning calving jugs to catching a bull's eye for that perfect picture, there are more folks that lend a hand in the success of our program that we ever could possibly mention. We are so grateful to each and every one of you that has helped this past year.

A Special

Thank You to the following...

- Steve Williams and the Midland Bull Test Crew for taking such good care of our bulls day to day health needs and providing a facility for the Efficiency Testing.
- John Goggins for Catalog photos of the bulls.
- Don & Tammy Kruger with the Bowman Vet Clinic in Bowman, ND for semen testing the bulls this year and the all-to-often short notice ranch calls for brand inspections and health papers.
- Scott & Sam Fraser with Frontier Live Sales for the Videos and Online Production.
- The Fallon County Vet Clinic out of Baker MT for Preg Testing our cows and assisting with herd health throughout the year.
- Caryl & Compahy out of Billings, MT for all the amazing ads and this beautiful catalog.
- Tanner Jensen out of Gold Creek, MT for the fine job clipping bulls.
- Austin Snook and the crew at the Buffalo Livestock Market for providing the sale venue and taking excellent care of our cattle both before and after the sale.
- Marcia Gaines, Kelsey McDonnell, Trinity Rodriquez & Grace Garro for preparing and serving up a wonder meal and sweets after the sale.
- Michael and Layne Rodriquez for calving our heifer this past spring when our barn wasn't quite ready.
- Leo McDonnell for all the countless hours helping working bulls at Midland this past winter – Freeze Branding, Semen Testing, Videoing – We can never Thank You enough.
- Dave Moore of Laramie WY for every creative idea to help us troubleshoot the newest calving or feeding issue.
- Ashton Battest, Coy Marmon, & Owen Atwell and hours of filling in as needed wherever needed – Gavin has some hard working friends !
- Oscar and Chentil Griggs for a sale day water line fix and so much help packing this past spring.
- Dallas and Gavin, for skipping work and missing fun with friends to help out whenever we need it. It's always more fun with the two of you.



READING PERFORMANCE INFORMATION

Expected Progeny Difference (EPD) is the estimate of how future progeny of each sire are expected to perform in each of the traits listed. EPD is expressed in pounds either plus or minus. For example, when used on the same cow, calves sired by a bull with a + 55 weaning EPD should average 10 pounds more than those sired by a bull with a +45 weaning EPD. EPDs are current as of March 21, 2022. Updated EPDs can be found at www.ANGUS.org

CALVING EASE DIRECT (CED EPD)

Is expressed in percentage of unassisted births, predicting the average difference in ease with which a sire's calves will be born when he is bred to first calf heifers. **A positive value is more desirable here.**

BIRTH (BW EPD)

Is expressed in pounds, is a predictor of a sire's ability to transmit birth weight to his progeny. **Breeder's preference can vary here greatly – the closer to 0 the better in our book.**

WEANING (WW EPD)

Is expressed in pounds, is a predictor of a sire's ability to transmit weaning growth to his progeny. **A high positive value is most desirable.**

YEARLING (YW EPD)

Is expressed in pounds, is a predictor of a sire's ability to transmit yearling growth to his progeny. **A high positive value is most desirable.**

207

GM THEDFORD 207

DOB: 3/10/2022

Reg # 20542097

Tattoo: 207

BAR R JET BLACK 5063

CONNEALY BLACK GRANITE

HOFFMAN THEDFORD

BAR R IRIS ANITA 0113

HA RITO LADY 3839

KG SOLUTION 0018

HA RITO LADY 0622

K C F BENNETT ABSOLUTE

S A V FINAL ANSWER 0035

MCD-3-1 PERFORMISS 620

THOMAS MISS LUCY 5152

MCD-1 PERFORMISS 7016 106

BASIN YELLOWSTONE R178

MID PERFORMISS 3028

CED	BW	WW	YW	MILK	MARB	RE	\$W	\$B
2	2.3	83	162	31	.82	1.05	77	210

ACT. BW

ADJ. WW

WWR

SCROTAL

ACT. EPD

RFI EPD

87

678

102

35.5

-0.02

-1.06

WEANED CALF VALUE (\$ W)

Expressed in dollars per head, is the expected average difference in future progeny performance for preweaning merit. \$W includes both revenue and cost adjustments associated with differences in birth weight, weaning direct growth, maternal milk and mature cow size. The underlying objective being producer will retain 20% of the female progeny as replacements and sell the rest of the cull females and males as feeder calves.

BEEF VALUE (\$ B)

Expressed in dollars per head, is the expected average difference in future progeny performance for post weaning and carcass value compared to progeny of other sires.

MILK (MILK EPD)

Is a predictor of a sire's genetic merit for milk and mothering ability.

MARBLING (MARB EPD)

Intramuscular Fat EPD - Is expressed as a fraction of the difference in Intramuscular fat in the ribeye muscle of a sire's progeny compared to that of other sires. Derived by Ultrasound.

RIBEYE AREA (RE EPD)

Expressed in square inches, is a predictor of the difference in ribeye area of a sire's progeny compared to progeny of other sires. Derived by Ultrasound.

EFFICIENCY EPD (RFI EPD)

Optimizes the balance between performance and efficiency. It measures how efficiently the caloric content of feed is converted into pounds. **A negative # is most desirable.**

SCROTAL

Actual scrotal measurement provided in centimeters taken by Don Kruger with the Bowman Vet Clinic on March 8th.



AAA AVERAGES FOR CURRENT SIRES

CED EPD	BW EPD	WN EPD	YW EPD	Milk EPD	MARB EPD	RE EPD	\$W	\$B	AAA RFI EPD
+6	+1.2	+60	+107	+26	+.55	+.57	+56	+134	+0.04



Unable to attend in person on sale day?

The Sale will be broadcast live on
www.frontierlivesale.com



1. Create an account, if you have already done so skip to next step. To create a new account, click on the word **REGISTRATION** in the upper right hand corner. You must fill out the information requested. Then click **CREATE ACCOUNT**. An email will be sent to your email account you provided. Please click the link in the email to activate your new account.
2. Once you click the link, your account will now be activated.
3. At this point, you may click **CONTINUE TO BROWSE OUR SITE**. This allows you to view all upcoming auctions.
4. Once you see **McDonnell Angus Bulls of the Bighorns**, click **GET APPROVED TO BID** for absentee and live bidding.
5. Please enter your information in the form. Depending on the auctioneer, different information may be requested. Click **I AGREE TO SALE TERMS AND CONDITIONS**.

Congratulations! You are now approved for the auction. Now that you're approved you can participate in the auction and bid on its items.

6. Login on **April 22, 2023** with the credentials you provided at registration.

BROADCAST LIVE ON WWW.FRONTIERLIVESALE.COM

Call 866-313-0123 for technical help.

INDEX BY SIRE

Bulls **WILL NOT** sell
in Lot Order – Sale
Order will be available
on April 21st on our
website, Facebook &
Frontier Live Sales.

Sterling Confidence Plus 804	Lot # 201
Myers Fair-N-Square	Lot # 203 - 204
Hoffman Thedford.....	Lot # 205 - 208
SAV Rainfall 6846	Lot # 209
Campbell Rainfall 932.....	Lot # 210
Byergo Jet Black H25	Lot # 211 - 214
GAR Kansas.....	Lot # 215 - 216
SAV America	Lot # 217 - 218
Granger Black Eagle 822	Lot # 220 - 223
MCD B Eagle 0102	Lot # 224 - 225
MCD Effective 789	Lot # 226 - 230, 287
Hamilton Charm	Lot # 231, 234 - 235
CCA Uno 049	Lot # 232 - 233
ICC Epic 1429-8257	Lot # 236 - 240

REFERENCE SIRES



STERLING CONFIDENCE PLUS 804

DOB: 01/12/2018

Reg # 19189229

Tattoo: 804

CONNEALY CONFIDENCE 0100
CONNEALY CONFIDENCE PLUS
ELBANNA OF CONANGA 1209

HOOVER DAM
BALDRIDGE ISABEL B111
BALDRIDGE ISABEL T935

CED	BW	WW	YW	MILK	MARB	RE	\$W	\$B
10	-1.3	65	125	24	1.10	1.00	64	187

- A HIGH EFFICIENCY bull that won the Snyder's GrowSafe bull test in 2019 finishing the test with a -3.84 RFI score and gaining 5.31lb per day. He is long bodied and moderate with great structure and feet. ranks in the top 2% for RFI of all breeds in the Vytelle/GrowSafe data base. Top 10% Marbling, Ribeye, \$ Maternal



MYERS FAIR-N-SQUARE M39

DOB: 01/07/2019

Reg # 19418329

Tattoo: M39

CONNEALY ONWARD
SITZ UPWARD 307R
SITZ HENRIETTA PRIDE 81M

SITZ ALLIANCE 6595
MYTTY COUNTESS 906
BALDRIDGE COUNTESS 357

CED	BW	WW	YW	MILK	MARB	RE	\$W	\$B
5	2.0	78	132	23	.94	.87	69	166

- Fair-N-Square is unique for his balanced length and depth of body, with impressive volume, performance and quality. His toe shape and heel depth are as good as it gets, and his pedigree is full of dams that bred first-service A.I. for many years. His pedigree has proven to be efficient as 4 of the 6 sons on test at MBT in 2023 have all proven to be Negative RFI.



HOFFMAN THEDFORD

DOB: 01/28/2020

Reg # 19820180

Tattoo: 0061

CONNEALY BLACK GRANITE
BAR R JET BLACK 5063
BAR R IRIS ANITA 0113

KG SOLUTION 0018
HA RITO LADY 3839
HA RITO LADY 0622

CED	BW	WW	YW	MILK	MARB	RE	\$W	\$B
14	-.5	84	155	35	.57	.99	87	192

- A Jet Black son out of Dave Hinman's top cow HA Rito Lady 3839. He is the highest Heifer Pregnancy Jet Black son in the breed and his progeny are doing well on the feed efficiency tests. Excellent feet and structure. He is also in the top 2% of breed for \$Maternal.



BYERGO JET BLACK H25

DOB: 02/23/2020

Reg # 19824699

Tattoo: H25

COLEMAN CHARLO 0256
S A V RAINFALL 6846
S A V BLACKCAP MAY 4136

LD EMBLAZON 999
BYERGO CLOVER 801
BYERGO CLOVER 150

CED	BW	WW	YW	MILK	MARB	RE	\$W	\$B
12	-.2	78	137	22	.29	.61	68	146

- He was one of the high efficiency bulls out of the 2021 Midland Test. He was purchased by MJB Angus of Lodge Grass, MT and Hone Angus of Gardnerville, NV. He is a moderate framed, long bodied bull with a very nice uddered and teated mother. His progeny exhibits early maturity, great feet and legs, and have now done very well on 3 different efficiency tests. He also works very well on heifers and has a great disposition.

REFERENCE SIRES

G A R KANSAS

DOB: 08/25/2018

Reg # 19266637

Tattoo: 6528

G A R EARLY BIRD
G A R ASHLAND
CHAIR ROCK AMBUSH 1018

G A R MOMENTUM
CHAIR ROCK MOMENTUM 6057
CHAIR ROCK SURE FIRE 4060

CED	BW	WW	YW	MILK	MARB	RE	\$W	\$B
16	-.4	75	139	27	1.80	1.23	72	215

- Kansas is a highly used for his superior calving ease, disciplined stature, and remarkable blend of marbling and ribeye. His first calves solidified his place as a heifer bull and were admired for their rapid early growth, body capacity, and muscle expression.



S A V AMERICA 8018

DOB: 01/31/2018

Reg # 19249580

Tattoo: 8018

COLEMAN CHARLO 0256
S A V PRESIDENT 6847
S A V BLACKCAP MAY 4136

S A F 598 BANDO 5175
S A V MADAME PRIDE 0075
S A V MADAME PRIDE 8264

CED	BW	WW	YW	MILK	MARB	RE	\$W	\$B
1	4.6	80	135	21	.47	.83	59	140

- The all time high selling bull out of Schaff Angus Valley in North Dakota. His dam is SAV Madame Pride 0075 and she stayed in the Schaff herd until she was 20 years old.



MCD EFFECTIVE 789

DOB: 03/08/2017

Reg # 18952013

Tattoo: 789

CONNEALY CAPITALIST 028
AB-LVS CAPITALIST 4507
AB-LVS EMMA 096

WILLEKES CONVERTER 4402-9
MCD PERFORMISS 238
313 PERFORMISS 006

CED	BW	WW	YW	MILK	MARB	RE	\$W	\$B
5	1.9	68	127	27	1.10	.45	59	184

- One of our top efficiency bulls in our 2018 sale with an RFI of -3.57. He came of test at 1247 lbs. with a feed conversion of 4.9 lbs. feed/lb. of gain. His mother has been one of our top producing cows. "789" calves show a lot of thickness and shape to their ribs with his sons being the most popular sire group the last 2 years at our sales. The daughters, much like his sire have nice udders and small teats and a great breed back. 789 now ranks in the top 2% for RFI of all breeds in the Vytelle/GrowSafe data base, which is the largest feed intake data base in North America. Top 15% for combined foot score



GRANGER BLACK EAGLE 822

DOB: 02/09/2018

Reg # 19213529

Tattoo: 822

GRANGER GREAT FALLS 053
GRANGER GREAT FALLS 630
GRNAGER PRIDE RACHEL 890

GRANGER BLACK CEDAR 150
GRANGER PRIDE RACHEL 685
GRANGER PRIDE RACHEL 420

CED	BW	WW	YW	MILK	MARB	RE	\$W	\$B
6	2.3	81	144	27	.25	.60	70	127

- A HIGH EFFICIENCY bull out of the 2019 Midland Bull Test. A negative RFI with an efficiency ratio of 108,116 Rib Eye ratio and a 109 IMF Ratio. His maternal lines on the top and bottom are great. He is going to b+e a cow-maker. You can expect him to add capacity, bone, foot structure and udder quality. A true high performance sire with good foot structure, big bone, wide topped with a lot of style...is also in top 10% of Angus for PAP.



REFERENCE SIRES



S A V RAINFALL 6846

DOB: 01/09/2016 Reg # 18578963 Tattoo: 6846

O C C PAXTON 730P S A V 8180 TRAVELER 004
COLEMAN CHARLO 0256 S A V BLACKCAP MAY 4136
 BOHI ABIGALE 6014 S A V MAY 2397

CED	BW	WW	YW	MILK	MARB	RE	\$W	\$B
8	.4	55	107	26	.63	.64	64	119

- A High RFI sire who is in the top 15% of all breeds for RFI and top 16% for low intake while still maintaining a respectable WW EPD and YW EPD of +108. With today's feed costs, feed and pasture efficiency is easily 5 times more important to your bottom line than adding more growth. Rainfall is in the top 20% of angus sires for Heifer Pregnancy, top 10% for combined foot score, and top 3% for \$Maternal. Beautiful uddered and teated females. now ranks in top 6% for RFI of all breeds

CAMPBELL RAINFALL 932

DOB: 02/27/19 Reg # 19609626 Tattoo: 932

COLEMAN CHARLO 0256 BARSTOW BANKROLL B73
S A V RAINFALL 6846 PROBST MISS BANKROLL 748
 S A V BLACKCAP MAY 4136 LEADORE DEENA C732

CED	BW	WW	YW	MILK	MARB	RE	\$W	\$B
8	-0.1	58	110	29	.52	0.68	62	130

- Campbell Rainfall continues on with the genetic value of SAV Rainfall. He came out of the 2020 Midland Test with an Efficiency ratio of 109. A calving ease bull who is in the top 10% for Heifer Pregnancy, top 15% for Combined Foot Score, top 4% for \$ Maternal with a great ribeye.

MCD B EAGLE 0102

DOB: 03/23/20 Reg # 19849292 19849292 Tattoo: 0102

GRANGER GREAT FALLS 630 PERFORMER 884
GRANGER BLACK EAGLE 822 MCD-2 PRIMROSE 443
 GRANGER PRIDE RACHEL 685 MCD PRIMROSE 202

CED	BW	WW	YW	MILK	MARB	RE	\$W	\$B
11	0.8	64	124	28	0.59	0.61	58	131

- A -1.0 RFI son of Black Eagle 822 Leo raised off the Hamilton Unit. The dam has produced 3 herd bulls. Thick butted, nice footed bull.

C C A UNO 049

DOB: 01/14/2010 Reg # 16644974 Tattoo: 049

CONNEALY ONWARD SITZ ALLIANCE 6595
SITZ UPWARD 307R MYTTY COUNTESS 906
 SITZ HENRIETTA PRIDE 81M BALDRIDGE COUNTESS 357

CED	BW	WW	YW	MILK	MARB	RE	\$W	\$B
7	1.4	57	98	35	.36	.50	67	113

- Had an RFI of -0.6. When we retired him at 9 1/2 years of age after breeding his last set of cows that summer. He came off grass at 2200 lbs. and still very active with Great Feet. At the time he was in the top 3% of the breed for foot score, top 4% of the breed for Docility, top 5% for scrotal and top 10% for \$ Maternal. He has left us and a lot of other folks some great daughters that stay in the herd. top 10% for combined foot score, top 10% Docility, top 10% scrotal, top 15% \$ Maternal

HAMILTON CHARM

DOB: 01/28/20 Reg # 19888269 Tattoo: 1160

SILVEIRAS CONVERSION 8064 BASIN PAYWEIGHT 1682
BUBS SOUTHERN CHARM AA31 SHAW LADY PAYWEIGHT 6059
 HICKORY HILL ERICA 009 SHAW LADY UPWARD 1186Y

CED	BW	WW	YW	MILK	MARB	RE	\$W	\$B
3	3.2	75	129	27	.46	0.32	67	128

- An exceptional Southern Charm son that came of of the 2021 Midland Sale. The Champion High Efficiency in Group 1 at Midland in 2021. A very nice bull with a log of shape, thickness and great feet. First set of calves out of this bull have hit the ground running and are already catching eyes.

ICC EPIC 1429-8257

DOB: 12/23/2017 Reg # 19192960 Tattoo: 8257

VARILEK PRODUCT 2010 04 S A V FINAL ANSWER 0035
3F EPIC 4631 MCATL FOREVER LADY 1429-138
 ZEBU QUEEN 1072 ALC FOREVER LADY R025

CED	BW	WW	YW	MILK	MARB	RE	\$W	\$B
8	.4	69	134	23	.54	.29	61	134

- An exceptional Epic son that came out of 2019 Midland sale. He has an RFI EPD of -.29, a DMI EPD of -.29 and an Efficiency Index of 123. The dam is a low birth wt. cow who has had 4 calves with a Weaning Ratio of 108. She is also the dam to Musgrave Aviator. A very nice bull with a lot of shape and substance.

RFI IS 38-40% HERITABILITY, WHICH IS HIGH
 IN PRODUCTION TRAITS. RESEARCH HAS
 CONTINUALLY PROVEN THAT THERE IS 90%
 CORRELATION BETWEEN HOW A TESTED BULL
 DOES AND HOW HIS DAUGHTERS DO.



201 GM ACE 201
 DOB: 3/15/2022 Reg # 20549602 Tattoo: 201

CONNEALY CONFIDENCE PLUS
 STERLING CONFIDENCE PLUS 804
 BALDRIDGE ISABEL B111

BASIN PAYWEIGHT 1682
 MCD-1-2 LASS 802
 MCD-2 LASS 626

CONNEALY CONFIDENCE 0100
 ELBANNA OF CONANGA 1209
 HOOVER DAM
 BALDRIDGE ISABEL T935

BASIN PAYWEIGHT 0065
 21AR O LASS 7017
 RS SURVEYOR 1422
 MCD LASS 953

CED	BW	WW	YW	MILK	MARB	RE	\$W	\$B
3	1.7	63	111	25	.61	.50	59	137
ACT. BW	ADJ. WW	WWR	SCROTAL	ACT. EPD	RFI EPD			
81	613	92	36.0	0.51	-1.39			



204 GM CONFIDENCE 204
 DOB: 3/8/2022 Reg # 20542106 Tattoo: 204

WOODHILL BLUEPRINT
 MYERS FAIR-N-SQUARE M39
 MYERS MISS BEAUTY M136

QV FINAL ANSWER 5009
 MCD-3 PERFORMISS 847
 PERFORMISS 8500

CONNEALY CONFIDENCE PLUS
 WOODHILL EVERGREEN Z291-B233
 CONNEALY THUNDER
 MYERS MISS BEAUTY M476

S A V FINAL ANSWER 0035
 S A V EMBLYNETTE 7411
 SCHURRTOP AMERICAN 5846
 4L MID EMBLAZON P434

CED	BW	WW	YW	MILK	MARB	RE	\$W	\$B
4	1.3	73	128	26	.43	.65	68	146
ACT. BW	ADJ. WW	WWR	SCROTAL	ACT. EPD	RFI EPD			
76	656	99	36.0	-3.77	-1.86			

203 GM CONFIDENCE 203
 DOB: 3/19/2022 Reg # 20542089 Tattoo: 203

WOODHILL BLUEPRINT
 MYERS FAIR-N-SQUARE M39
 MYERS MISS BEAUTY M136

CONNEALY CONFIDENCE PLUS
 WOODHILL EVERGREEN Z291-B233
 CONNEALY THUNDER
 MYERS MISS BEAUTY M476

CONNEALY CONSENSUS 7229
 MCD LUCY 311
 MCD-3 LUCY 146

CONNEALY CONSENSUS
 BLUE LILLY OF CONANGA 16
 OFF POUNDER U831
 MID LUCY 3019

CED	BW	WW	YW	MILK	MARB	RE	\$W	\$B
7	.6	72	122	29	.86	.69	75	150
ACT. BW	ADJ. WW	WWR	SCROTAL	ACT. EPD	RFI EPD			
78	746	112	37.0	2.07	-1.46			

PATHFINDER DAM

205 GM THEDFORD 205
 DOB: 3/7/2022 Reg # 20542090 Tattoo: 205

BAR R JET BLACK 5063
 HOFFMAN THEDFORD
 HA RITO LADY 3839

C C A UNO 049
 MCD-1 EILEEN 325
 BLEVINS EILEEN DESTINE 9620

CONNEALY BLACK GRANITE
 BAR R IRIS ANITA 0113
 KG SOLUTION 0018
 HA RITO LADY 0622

SITZ UPWARD 307R
 MYTTY COUNTNESS 906
 G A R PREDESTINED
 BLEVINS EILEEN ENHANCER 3476

CED	BW	WW	YW	MILK	MARB	RE	\$W	\$B
10	-1.5	61	108	41	.51	.68	79	152
ACT. BW	ADJ. WW	WWR	SCROTAL	ACT. EPD	RFI EPD			
77	670	101	38.5	-0.73	-1.32			

PATHFINDER DAM



206 GM THEDFORD 206

DOB: 3/14/2022

Reg # 20542091

Tattoo: 206

BAR R JET BLACK 5063
HOFFMAN THEDFORD
HA RITO LADY 3839

CONNEALY BLACK GRANITE
BAR R IRIS ANITA 0113
KG SOLUTION 0018
HA RITO LADY 0622

ST MCD EXECUTIVE
MCD -4 LASS 508
MCD LASS 953

OFF RETAIL PRODUCT T134
POLINGS BARBARA R804
PINE COULEE ONWARD T68
MID LASS 5204 061

CED	BW	WW	YW	MILK	MARB	RE	\$W	\$B
9	-6	59	119	25	.86	.30	56	150
ACT. BW	ADJ. WW	WWR	SCROTAL	ACT. EPD	RFI EPD			
78	618	93	36.5	1.01	-0.85			



208 GM THEDFORD 208

DOB: 3/16/2022

Reg # 20542101

Tattoo: 208

BAR R JET BLACK 5063
HOFFMAN THEDFORD
HA RITO LADY 3839

CONNEALY BLACK GRANITE
BAR R IRIS ANITA 0113
KG SOLUTION 0018
HA RITO LADY 0622

MCD SF TOTAL 1348
MCD-1 LUCY 716
MCD LUCY 311

TC TOTAL 410
SF FOREVER LADY 233
CONNEALY CONSENSUS 7229
MCD-3 LUCY 146

CED	BW	WW	YW	MILK	MARB	RE	\$W	\$B
3	3.0	86	151	30	.44	.65	77	171
ACT. BW	ADJ. WW	WWR	SCROTAL	ACT. EPD	RFI EPD			
72	675	102	37.0	-1.54	-1.44			



207 GM THEDFORD 207

DOB: 3/10/2022

Reg # 20542097

Tattoo: 207

BAR R JET BLACK 5063
HOFFMAN THEDFORD
HA RITO LADY 3839

CONNEALY BLACK GRANITE
BAR R IRIS ANITA 0113
KG SOLUTION 0018
HA RITO LADY 0622

K C F BENNETT ABSOLUTE
MCD-3-1 PERFORMISS 620
MCD-1 PERFORMISS 7016 106

S A V FINAL ANSWER 0035
THOMAS MISS LUCY 5152
BASIN YELLOWSTONE R178
MID PERFORMISS 3028

CED	BW	WW	YW	MILK	MARB	RE	\$W	\$B
2	2.3	83	162	31	.82	1.05	77	210
ACT. BW	ADJ. WW	WWR	SCROTAL	ACT. EPD	RFI EPD			
87	678	102	35.5	-0.02	-1.06			

209 GM RAINFALL 209

DOB: 3/12/2022

Reg # 20548499

Tattoo: 209

COLEMAN CHARLO 0256
S A V RAINFALL 6846
S A V BLACKCAP MAY 4136

O C C PAXTON 730P
BOHI ABIGALE 6014
S A V 8180 TRAVELER 004
S A V MAY 2397

SCHAFFER 21C OF 514 1005
MCD-2 GLORY 430
BANIGAN GLORY 814

SCHAFFER 21ST CENTURY
CHASE 878 LADY BANDO 07-514
O C C GLORY 950G
NEWELLS PERFORMISS 453

CED	BW	WW	YW	MILK	MARB	RE	\$W	\$B
2	2.0	61	109	35	.49	.64	71	113
ACT. BW	ADJ. WW	WWR	SCROTAL	ACT. EPD	RFI EPD			
82	673	100	35.0	2.09	-0.94			

PATHFINDER DAM

VICTOR GONI
307-217-0735

LEO MCDONNELL
406-780-0176



SAM FRASER
406-860-0590

SCOTT FRASER
406-860-6548



This set of bulls were all tested @ Midland Bull Test in one group, weighing off on February 25, 2023. GS RFI EPD is a comparison of animals only within the Growsafe Database. The AAA RFI is a comparison of animals within the American Angus database. A negative EPD on either (G.S. EFI or AAA RFI) being the more efficient bulls. It is with great pride that we would like to point out that ALL but 1 of the bulls offered in this sale have a negative AAA RFI. **PROVEN PROGRESS.**

Tag	Bull	SIRE	DOB	Finish WT (lbs) 2/25/23	ADG	AVG DMI (lbs/Day)	Feed Conv	RFI	DMI EPD	G.S. RFI EPD	AAA RFI
201	GM Ace 201	Sterling Confidence Plus 804	03/15/22	911	2.80	20.35	7.25	0.51	-0.09	-0.10	-1.39
203	GM Confidence 203	Myers Fair-N-Square M39	03/19/22	1071	2.91	23.99	8.22	2.07	-0.33	-0.14	-1.46
204	GM Confidence 204	Myers Fair-N-Square M39	03/08/22	1087	3.68	19.00	5.17	-3.77	-0.75	-0.63	-1.86
205	GM Thedford 205	Hoffman Thedford	03/07/22	1089	4.52	22.84	5.05	-0.73	0.08	-0.01	-1.32
206	GM Thedford 206	Hoffman Thedford	03/14/22	1072	4.25	24.14	5.68	1.01	0.24	0.10	-0.85
207	GM Thedford 207	Hoffman Thedford	03/10/22	1139	4.63	24.23	5.23	-0.02	0.01	-0.14	-1.06
208	GM Thedford 208	Hoffman Thedford	03/16/22	1109	4.85	22.55	4.66	-1.54	-0.04	-0.11	-1.44
209	GM Rainfall 209	S A V Rainfall 6846	03/12/22	1077	3.62	24.69	6.84	2.09	-0.02	0.03	-0.94
210	GM Rainfall 210	Campbell Rainfall 932	02/16/22	1065	3.31	20.39	6.17	-1.79	-0.23	-0.19	-1.28
211	GM Jet Black 211	Byergo Jet Black H25	02/25/22	1048	3.84	20.22	5.26	-2.25	-0.36	-0.36	-1.89
212	GM Black Jack 225	Byergo Jet Black H25	03/09/22	1030	3.21	18.47	NA	NA	NA	-2.67	NA
213	GM Jet Black 213	Byergo Jet Black H25	02/19/22	1005	4.03	22.71	5.64	0.62	0.03	-0.06	-0.75
214	GM Jet Black 214	Byergo Jet Black H25	03/09/22	1015	3.46	NA	NA	NA	NA	NA	NA
215	GM Kansas 215	G A R Kansas	03/11/22	1155	4.81	25.33	5.26	0.71	0.20	0.03	-0.76
216	GM Kansas 216	G A R Kansas	03/14/22	1002	4.01	22.80	5.67	0.77	0.35	0.20	-0.46
217	GM America 217	S A V America 8018	03/21/22	1047	3.75	23.13	6.19	0.79	-0.07	0.00	-0.63
218	GM America 218	S A V America 8018	03/13/22	960	3.59	23.04	6.41	1.90	0.02	0.08	-0.66
220	GM Eagle 220	Granger Black Eagle 822	03/17/22	1259	4.94	26.52	5.36	0.53	0.07	0.03	-0.87
221	GM Eagle 221	Granger Black Eagle 822	03/18/22	1157	3.73	23.99	6.42	0.31	0.00	0.04	-0.93
222	GM Blackout 222	Granger Black Eagle 822	03/12/22	1040	2.84	25.62	NA	NA	NA	NA	NA
223	GM Eagle 223	Granger Black Eagle 822	03/06/22	1130	4.01	22.80	5.68	-0.79	-0.10	-0.08	-1.01
224	GM Eagle 224	McD B Eagle 0102	03/18/22	1099	3.42	24.85	7.28	2.16	0.11	0.19	-0.87
225	GM Eagle 225	McD B Eagle 0102	03/15/22	1034	4.25	27.51	6.47	4.87	0.56	0.44	0.17
226	GM Effective 226	McD Effective 789	02/16/22	1015	3.86	20.33	5.28	-1.72	-0.32	-0.33	-1.27
228	GM Effective 228	McD Effective 789	03/10/22	1022	3.66	20.08	5.50	-1.87	-0.35	-0.28	-1.59
229	GM Effective 229	McD Effective 789	03/16/22	874	3.31	17.33	5.25	-2.45	-0.27	-0.29	-1.46
230	GM Effective 230	McD Effective 789	03/07/22	999	4.06	21.54	5.30	-0.49	-0.20	-0.25	-0.94
231	GM Charm 231	Hamilton Charm	03/14/22	1064	3.88	20.64	5.32	-2.05	-0.12	-0.12	-1.36
232	GM Uno 232	C C A Uno 049	02/27/22	1027	3.02	20.44	6.76	-1.04	-0.36	-0.26	-1.15
233	GM Uno 233	C C A Uno 049	03/17/22	1150	3.15	22.00	6.97	-1.10	-0.26	-0.10	-0.89
234	GM Charm 234	Hamilton Charm	03/22/22	1010	3.24	23.35	7.19	1.90	0.14	0.14	-0.84
235	GM Charm 235	Hamilton Charm	03/24/22	919	3.84	21.85	5.70	1.04	0.10	0.03	-0.54
236	GM Epic 236	ICC Epic 1429-8257	04/01/22	1036	3.73	23.50	6.31	1.30	0.01	-0.03	-0.77
237	GM Epic 237	ICC Epic 1429-8257	03/04/22	1128	4.32	25.51	5.91	1.68	0.08	-0.03	-0.75
238	GM Epic 238	ICC Epic 1429-8257	03/10/22	1046	NA	NA	NA	NA	NA	NA	NA
239	GM Epic 239	ICC Epic 1429-8257	03/10/22	1074	4.08	21.63	5.30	-1.37	-0.21	-0.28	-1.13
240	GM Epic 240	ICC Epic 1429-8257	04/01/22	1078	4.76	22.40	4.71	-1.23	-0.07	-0.21	-1.16
287	GM Effective 287	McD Effective 789	03/09/22	1046	3.33	19.09	NA	NA	NA	NA	NA

RFI (RESIDUAL FEED INTAKE) (LBS/DAY)

The amount of feed intake an animal consumes daily, above or below its maintenance requirements as well as its performance (growth) requirements. **A negative RFI is a more efficient bull.**

Example: -2.0 means the bull ate 2 lbs. less feed per day than he needed to meet his body maintenance requirements and production needs (ADG). With today's feed costs, that is a savings of .40 cents/day or \$72.00 per feeding period. The difference between a -2.0 and a +2.0 bull is \$144.00 in the feedlot.

If you are keeping replacement females, by selecting for negative RFI, research has shown you have the potential to save close to \$60.00 per year on cow maintenance costs, and over \$100/cow in time by stacking generations of Efficiency genetics in your herd.

UNDERSTANDING EFFICIENCY AND RFI

Historically, the weight of an animal has been the most important component in determining value, which follows closely with production being the most heavily promoted and taught value in agriculture. **However**, when you consider that more than 75% of the cost of growing cattle is related to feed inputs, and that 70-75% of the feed consumed by cattle is solely for maintenance requirements, then the importance of improving the efficiency of feed intake becomes very real. With today's feed prices and narrow profit margins, improving a herd's efficiency of feed and pasture offers the greatest opportunity to improve Net Returns.



QUESTIONS AND ANSWERS

- **What is the heritability of RFI (Residual Feed Intake)?**
0.38-0.40 (Moderately to highly heritable).
- **How is RFI calculated?**
RFI is looking at what the feed intake requirement is for maintenance for the individual bulls and then what the feed intake requirements are for production (each individual bull's ADG) and compares that to what the individual bull actually consumes.
- **What is Feed Conversion?**
Feed Conversion is the pounds of feed on a dry matter basis required for one pound of gain.
- **What is DMI (Dry Matter Intake)?**
DMI, is the average daily feed intake on a dry matter basis.
- **How much difference can one expect to find in cattle?**
Research from Australia, Canada, and the U.S. have consistently found differences of up to 30%. Our first test group of 400 here at Midland, we found up to 40% variance.
- **If you have two cows weighing 1300 lbs and one produces 15 pounds of milk and the other 20 pounds of milk, wouldn't the other cow at 15 lbs require less feed?**
No, and it could just as well be that the 15 lbs. milk producer is a larger consumer of feed which compounds her inefficiency on both feed intake and lower production. That's the importance of measuring RFI. This is a case where size doesn't matter.
- **What should one be aware of when using RFI?**
First and most importantly, efficiency needs to be balanced with production and profitability. Low Intake with low production is no more cost effective than the high production and low efficiency.
- **Why can't we just use our eye and pick the more moderate, easy-fleshing cow?**
Don't confuse size or fleshing ease with efficient productive cattle. Contrary, to what some folks believe, RFI is not related to frame size, body type, or body condition. You'll find as many inefficient cows in any frame size and just because they look fat and easy-going doesn't mean they're efficient – it just means they're a fat cow.

WHAT DOES THE RESEARCH SAY ?

- Efficiency is highly related to profit and growth is the traditional method of measuring efficiency. The problem is that using growth as a measure of efficiency also increase the size of the animal, which will increase maintenance requirements (70-75% of feed consumed goes toward maintenance requirements), which will increase appetite, which will increase the need for available feeds/grasses.
- Using RFI will lead to improvements in feed efficiency without compounding the need for additional feeds or increasing mature size in your cow herd.
- RFI allows you to produce at a level that optimizes on one's management and environment instead of stressing it.
- RFI is a highly heritable trait, meaning that through genetic identification and then selection, one can make rapid improvements.
- RFI research has shown that improvement in efficiency can be made by as much as 25%.
- Selecting for efficiency will allow the cattle industry to become more competitive in production with swine and chicken.
- Research has shown there is a 0.90 correlation (very high) between bulls measured for RFI postweaning and how their daughters will perform for efficiency in the cowherd.

210 GM RAINFALL 210

DOB: 2/16/2022

Reg # 20542085

Tattoo: 210

S A V RAINFALL 6846
CAMPBELL RAINFALL 932
PROBST MISS BANKROLL 748

COLEMAN CHARLO 0256
S A V BLACKCAP MAY 4136
BARSTOW BANKROLL B73
LEADORE DEENA C732

MCD EFFECTIVE 789
GM 13-2 BLACKBIRD 042
MCD-9 BLACKBIRD 134

AB-LVS CAPITALIST 4507
MCD PERFORMISS 238
ROCK'N D PROFICIENT 2915
BLACKBIRDS EQ 403

CED	BW	WW	YW	MILK	MARB	RE	\$W	\$B
2	1.4	60	112	28	.72	.45	55	148
ACT. BW	ADJ. WW	WWR	SCROTAL	ACT. EPD	RFI EPD			
84	673	97	35.5	-1.79	-1.28			

213 GM JET BLACK 213

DOB: 2/19/2022

Reg # 20542084

Tattoo: 213

BAR R JET BLACK 5063
BYERGO JET BLACK H25
BYERGO CLOVER 801

CONNEALY BLACK GRANITE
BAR R IRIS ANITA 0113
LD EMBLAZON 999
BYERGO CLOVER 150

WRAF BELIEVE
GM 14-3 QUAN 033
MCD-2-9 SUNESS QUAN 465

MCR HORIZON 081
WRAF CLOVANDA LADY 3194
MCD AAR JUNEAU 944
MCD-9 SUNESS QUAN 253

CED	BW	WW	YW	MILK	MARB	RE	\$W	\$B
6	1.3	72	136	26	.34	.45	64	125
ACT. BW	ADJ. WW	WWR	SCROTAL	ACT. EPD	RFI EPD			
70	634	91	32.5	0.62	-0.75			

211 GM JET BLACK 211

DOB: 2/25/2022

Reg # 20542083

Tattoo: 211

BAR R JET BLACK 5063
BYERGO JET BLACK H25
BYERGO CLOVER 801

CONNEALY BLACK GRANITE
BAR R IRIS ANITA 0113
LD EMBLAZON 999
BYERGO CLOVER 150

E&B PLUS ONE
GM 2-2 BLACKBIRD 026
MCD-4 RITOESS BLACKBIRD 821

CONNEALY CONFIDENCE PLUS
E&B LADY 1023 PRECISION 936
QV FINAL ANSWER 5009
RITOESS BLACKBIRD 019

CED	BW	WW	YW	MILK	MARB	RE	\$W	\$B
9	1.3	74	122	30	-.21	.77	74	125
ACT. BW	ADJ. WW	WWR	SCROTAL	ACT. EPD	RFI EPD			
80	723	104	33.5	-2.25	-1.89			

214 GM JET BLACK 214

DOB: 3/9/2022

Reg # 20542088

Tattoo: 214

BAR R JET BLACK 5063
BYERGO JET BLACK H25
BYERGO CLOVER 801

CONNEALY BLACK GRANITE
BAR R IRIS ANITA 0113
LD EMBLAZON 999
BYERGO CLOVER 150

MCD BEAR 037
MCD-3 SUNESS 237
SUNESS FA 865

PINE COULEE ONWARD T68
COLE CREEK JUANADA NITA 37T
J MC FAT ALBERT 6155
MID PERFORMISS 575

CED	BW	WW	YW	MILK	MARB	RE	\$W	\$B
4	2.7	67	114	23	.39	.31	60	135
ACT. BW	ADJ. WW	WWR	SCROTAL	ACT. EPD	RFI EPD			
84	665	100	37.0	NA	NA			

212 GM BLACK JACK 225

DOB: 3/9/2022

Reg # 20501137

Tattoo: 225

BAR R JET BLACK 5063
BYERGO JET BLACK H25
BYERGO CLOVER 801

CONNEALY BLACK GRANITE
BAR R IRIS ANITA 0113
LD EMBLAZON 999
BYERGO CLOVER 150

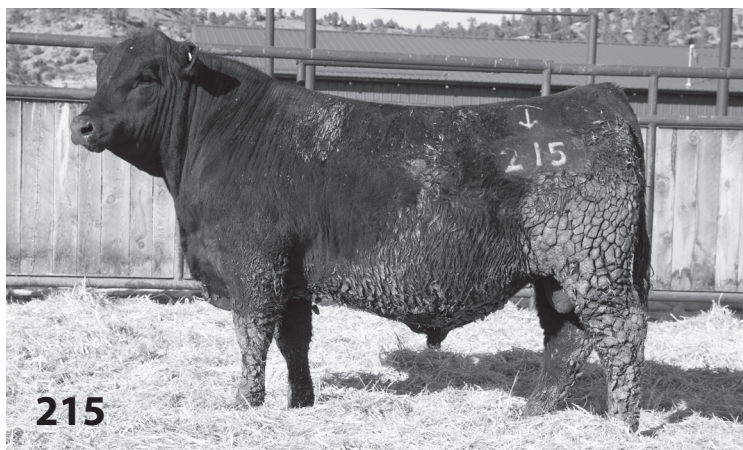
WILLEKES CONVERTER 4402-9
MCD-3 ENCHANTRESS 225
ENCHANTRESS CEDAR 067

RITO 112 OF 2536 RITO 616
WILLEKES LADY OF 410
COLE CREEK BLACK CEDAR 46P
ENCHANTRESS NOTCH 400

CED	BW	WW	YW	MILK	MARB	RE	\$W	\$B
4	1.9	70	111	28	.35	.43	70	127
ACT. BW	ADJ. WW	WWR	SCROTAL	ACT. EPD	RFI EPD			
87	745	112	34.5	-2.67	NA			



Preconditioning and Weaning



215

GM KANSAS 215

DOB: 3/11/2022

Reg # 20542098

Tattoo: 215

G A R ASHLAND

G A R EARLY BIRD

G A R KANSAS

CHAIR ROCK AMBUSH 1018

CHAIR ROCK MOMENTUM 6057

G A R MOMENTUM

CHAIR ROCK SURE FIRE 4060

RS SURVEYOR 1422

SITZ WISDOM 481T

MCD-2-9 ENCHANTRESS 687

RS NEW STANDARD R15 U5

MCD BRUN-9 ENCHANTRESS 201

ROCK'N D PROFICIENT 2915

BAR ERICA RIGHT TIME 851

CED	BW	WW	YW	MILK	MARB	RE	SW	\$B
13	.1	70	130	32	1.05	.84	71	162

ACT. BW	ADJ. WW	WWR	SCROTAL	ACT. EPD	RFI EPD
80	692	104	36.0	0.71	-0.76



Leo, Scott & Bob Videoring Bulls

216

GM KANSAS 216

DOB: 3/14/2022

Reg # 20542099

Tattoo: 216

G A R ASHLAND

G A R EARLY BIRD

G A R KANSAS

CHAIR ROCK AMBUSH 1018

CHAIR ROCK MOMENTUM 6057

G A R MOMENTUM

CHAIR ROCK SURE FIRE 4060

V A R RESERVE 1111

B/R NEW DAY 454

MCD-1 BABETTE 705

SANDPOINT BLACKBIRD 8809

BABETTE PERFORMISS 018

SITZ UPWARD 307R

MID 1148 TIMES 341

CED	BW	WW	YW	MILK	MARB	RE	\$W	\$B
13	-.7	61	111	28	1.27	1.12	62	173

ACT. BW	ADJ. WW	WWR	SCROTAL	ACT. EPD	RFI EPD
76	624	94	35.5	0.77	-0.46

217

GM AMERICA 217

DOB: 3/21/2022

Reg # 20542093

Tattoo: 217

S A V PRESIDENT 6847

S A V AMERICA 8018

S A V MADAME PRIDE 0075

COLEMAN CHARLO 0256

S A V BLACKCAP MAY 4136

S A F 598 BANDO 5175

S A V MADAME PRIDE 8264

KOUPAL CZECH 158

MCD EOLA 524

EOLA'S PERFORMISS-3 118

KOUPAL JUNEAU 797

KOUPAL KARAMA 729

WILLEKES CONVERTER 4402-9

MID PERFORMISS 462

CED	BW	WW	YW	MILK	MARB	RE	SW	\$B
10	1.7	61	111	30	.45	.56	62	119

ACT. BW	ADJ. WW	WWR	SCROTAL	ACT. EPD	RFI EPD
79	690	104	36.5	0.79	-0.63

218

GM AMERICA 218

DOB: 3/13/2022

Reg # 20542103

Tattoo: 218

S A V PRESIDENT 6847

S A V AMERICA 8018

S A V MADAME PRIDE 0075

COLEMAN CHARLO 0256

S A V BLACKCAP MAY 4136

S A F 598 BANDO 5175

S A V MADAME PRIDE 8264

S A V FINAL ANSWER 0035

MCD -33-1 LUCY 800

MCD-1 LUCY 636

SITZ TRAVELER 8180

S A V EMULOUS 8145

C C A UNO 049

MID LUCYS 608

CED	BW	WW	YW	MILK	MARB	RE	SW	\$B			
8	1.6	62	112	30	.38	.67	62	124			
ACT. BW		ADJ. WW		WWR		SCROTAL		ACT. EPD		RFI EPD	
73		614		92		32.5		1.9		-0.66	





220 GM EAGLE 220
 DOB: 3/17/2022 Reg # 20542094 Tattoo: 220

GRANGER GREAT FALLS 630
 GRANGER BLACK EAGLE 822
 GRANGER PRIDE RACHEL 685

C C A UNO 049
 MCD-1 BEAUTY 529
 MCD BEAUTY 220

SITZ UPWARD 307R
 MYTTY COUNTESS 906
 BASIN YELLOWSTONE R178
 DM BEAUTY 266

CED	BW	WW	YW	MILK	MARB	RE	\$W	\$B
7	3.5	92	152	21	.83	.81	76	162
ACT. BW	ADJ. WW	WWR	SCROTAL	ACT. EPD	RFI EPD			
80	778	117	40.5	0.53	-0.87			



221 GM EAGLE 221
 DOB: 3/18/2022 Reg # 20542096 Tattoo: 221

GRANGER GREAT FALLS 630
 GRANGER BLACK EAGLE 822
 GRANGER PRIDE RACHEL 685

C C A UNO 049
 MCD -1 TIMES 561
 MCD 1148 TIMES 275

SITZ UPWARD 307R
 MYTTY COUNTESS 906
 BASIN YELLOWSTONE R178
 MID 1148 TIMES 341

CED	BW	WW	YW	MILK	MARB	RE	\$W	\$B
-1	4.3	81	137	30	.37	.99	70	144
ACT. BW	ADJ. WW	WWR	SCROTAL	ACT. EPD	RFI EPD			
84	702	106	38.0	0.31	-0.93			



Nathan Preg Testing

222 GM BLACKOUT 222
 DOB: 3/12/2022 Reg # 20505263 Tattoo:

GRANGER GREAT FALLS 630
 GRANGER BLACK EAGLE 822
 GRANGER PRIDE RACHEL 685

MCD AAR JUNEAU 944
 MCD-2-9 QUAN BEAUTY 440
 MCD-9 QUAN BEAUTY 222

O C C JUNEAU 807J
 MID AMBUSHESS 354
 ROCK'N D PROFICIENT 2915
 QUAN BEAUTY 480

CED	BW	WW	YW	MILK	MARB	RE	\$W	\$B
6	.3	72	121	40	.77	.66	82	132
ACT. BW	ADJ. WW	WWR	SCROTAL	ACT. EPD	RFI EPD			
81	761	115	36.0	NA	NA			

PATHFINDER DAM



223 GM EAGLE 223

DOB: 3/6/2022

Reg # 20542100

Tattoo: 223

GRANGER GREAT FALLS 630
GRANGER BLACK EAGLE 822
GRANGER PRIDE RACHEL 685

GRANGER GREAT FALLS 053
GRANGER PRIDE RACHEL 890
GRANGER BLACK CEDAR 150
GRANGER PRIDE RACHEL 420

SPUR FRANCHISE OF GARTON
MCD-2-2 PERFORMISS 709
MCD-2 PERFORMISS 328

SPUR FRANCHISE 7070
H&H IRENE LASS 0135
BASIN YELLOWSTONE R178
MID PERFORMISS 746

CED	BW	WW	YW	MILK	MARB	RE	\$W	\$B
0	3.9	76	134	26	.44	.61	59	127
ACT. BW	ADJ. WW	WWR	SCROTAL	ACT. EPD	RFI EPD			
85	651	98	38.0	-0.79	-1.01			

PATHFINDER DAM

226 GM EFFECTIVE 226

DOB: 2/16/2022

Reg # 20542082

Tattoo: 226

AB-LVS CAPITALIST 4507
MCD EFFECTIVE 789
MCD PERFORMISS 238

CONNEALY CAPITALIST 028
AB-LVS EMMA 096
WILLEKES CONVERTER 4402-9
313 PERFORMISS 006

LT CONVERSE 8011
GM 1-1 PERFORMISS 061
MCD PERFORMISS 243

CONNEALY CONFIDENCE PLUS
LT NORDICA 6066
BASIN YELLOWSTONE R178
MID PERFORMISS 609

CED	BW	WW	YW	MILK	MARB	RE	\$W	\$B
-3	4.1	65	107	29	.91	.33	60	147
ACT. BW	ADJ. WW	WWR	SCROTAL	ACT. EPD	RFI EPD			
85	668	96	34.5	-1.72	-1.27			

224 GM EAGLE 224

DOB: 3/18/2022

Reg # 20559250

Tattoo: 224

GRANGER BLACK EAGLE 822
MCD B EAGLE 0102
MCD-2 PRIMROSE 443

GRANGER GREAT FALLS 630
GRANGER PRIDE RACHEL 685
PERFORMER 884
MCD PRIMROSE 202

CONNEALY CONSENSUS 7229
MCD PERFORMISS 320
PERFORMISS 2063 822

CONNEALY CONSENSUS
BLUE LILLY OF CONANGA 16
SCHURR 77 527 2063
MID PERFORMISS 6114

CED	BW	WW	YW	MILK	MARB	RE	\$W	\$B
5	2.2	69	119	27	.48	.68	62	126
ACT. BW	ADJ. WW	WWR	SCROTAL	ACT. EPD	RFI EPD			
80	686	103	38.0	2.16	-0.87			



225X GM EAGLE 225

DOB: 3/15/2022

Reg # 20550252

Tattoo: 225X

GRANGER BLACK EAGLE 822
MCD B EAGLE 0102
MCD-2 PRIMROSE 443

GRANGER GREAT FALLS 630
GRANGER PRIDE RACHEL 685
PERFORMER 884
MCD PRIMROSE 202

TM CASH 516
MCD-2-9 EQUATORESS 733
MCD-2 EQUATORESS 427

BARSTOW CASH
MSU ELBA 002
SCHAFFER 21C OF 514 1005
EQUATORESS 005

CED	BW	WW	YW	MILK	MARB	RE	\$W	\$B
8	1.0	61	108	35	.60	.27	67	98
ACT. BW	ADJ. WW	WWR	SCROTAL	ACT. EPD	RFI EPD			
77	604	91	38.5	4.87	0.17			

PATHFINDER DAM

228 GM EFFECTIVE 228

DOB: 3/10/2022

Reg # 20542092

Tattoo: 228

AB-LVS CAPITALIST 4507
MCD EFFECTIVE 789
MCD PERFORMISS 238

CONNEALY CAPITALIST 028
AB-LVS EMMA 096
WILLEKES CONVERTER 4402-9
313 PERFORMISS 006

SPUR FRANCHISE OF GARTON
MCD-4 LUCY 520
MCD LUCY 311

SPUR FRANCHISE 7070
H&H IRENE LASS 0135
CONNEALY CONSENSUS 7229
MCD-3 LUCY 146

CED	BW	WW	YW	MILK	MARB	RE	\$W	\$B
7	.7	49	89	27	.86	.44	48	141
ACT. BW	ADJ. WW	WWR	SCROTAL	ACT. EPD	RFI EPD			
85	683	103	34.5	-1.87	-1.59			

PATHFINDER DAM

Recently, we measured forage intake on cows that have survived under Arizona ranch conditions at the UA V-V Ranch. The low RFI cows consumed hay at 1.9% of body weight while the high RFI cows consumed hay at 2.4% of BW (20% Difference in feed intake)...suggests that RFI may be useful in selecting cows that survive under arid range conditions.

~ University of Arizona



229

GM EFFECTIVE 229
 DOB: 3/16/2022 Reg # 20542102 Tattoo: 229

MCD EFFECTIVE 789
 MCD PERFORMISS 238

AB-LVS CAPITALIST 4507
 CONNEALY CAPITALIST 028
 AB-LVS EMMA 096
 WILLEKES CONVERTER 4402-9
 313 PERFORMISS 006

MCD-2 QUANTESS 772
 QUANTESS FA 857

SCHURR MCD IMPACT OF GARTON
 CONNEALY CAPITALIST 028
 H&H IRENE LASS 0135
 J MC FAT ALBERT 6155
 QUANTESS 410

CED	BW	WW	YW	MILK	MARB	RE	\$W	\$B
9	1.7	61	107	23	.69	.57	58	144

ACT. BW	ADJ. WW	WWR	SCROTAL	ACT. EPD	RFI EPD
71	608	92	37.5	-2.45	-1.46

232

G M UNO 232
 DOB: 2/27/2022 Reg # 20542086 Tattoo: 232

C C A UNO 049
 MYTTY COUNTESS 906

SITZ UPWARD 307R
 CONNEALY ONWARD
 SITZ HENRIETTA PRIDE 81M
 SITZ ALLIANCE 6595
 BALDRIDGE COUNTESS 357

MCD BRUN-9 ENCHANTRESS 201
 BAR ERICA RIGHT TIME 851

ROCK'N D PROFICIENT 2915
 RITO 4612 OF RITA 8G23 112
 MISS TRICIA BLACKCAP OF RDR
 LEACHMAN RIGHT TIME
 BASIN TROJAN ERICA D S 637Y

CED	BW	WW	YW	MILK	MARB	RE	\$W	\$B
11	-.4	60	112	38	.43	.46	70	131

ACT. BW	ADJ. WW	WWR	SCROTAL	ACT. EPD	RFI EPD
75	702	106	37.5	-1.04	-1.15

PATHFINDER DAM | PATHFINDER SIRE

230

GM EFFECTIVE 230
 DOB: 3/7/2022 Reg # 20542104 Tattoo: 230

MCD EFFECTIVE 789
 MCD PERFORMISS 238

AB-LVS CAPITALIST 4507
 CONNEALY CAPITALIST 028
 AB-LVS EMMA 096
 WILLEKES CONVERTER 4402-9
 313 PERFORMISS 006

MCD-2 ALFALFA'S CEDAR 804
 ALFALFA'S CEDAR 071

CONNEALY COUNSELOR
 CONNEALY MENTOR 7374
 JAZE OF CONANGA 234
 COLE CREEK BLACK CEDAR 46P
 FROSTY CRK ALFALFA 750

CED	BW	WW	YW	MILK	MARB	RE	\$W	\$B
6	1.9	54	99	32	.70	.70	54	143

ACT. BW	ADJ. WW	WWR	SCROTAL	ACT. EPD	RFI EPD
80	599	90	35.5	-0.49	-0.94

233

GM UNO 233
 DOB: 3/17/2022 Reg # 20542095 Tattoo: 233

C C A UNO 049
 MYTTY COUNTESS 906

SITZ UPWARD 307R
 CONNEALY ONWARD
 SITZ HENRIETTA PRIDE 81M
 SITZ ALLIANCE 6595
 BALDRIDGE COUNTESS 357

MCD 0-3 BLACKBIRD 543
 MCD-3 BLACKBIRD 183

KOU PAL CZECH 158
 KOU PAL JUNEAU 797
 KOU PAL KARAMA 729
 OFF POUNDER U831
 PERFORMISS 239

CED	BW	WW	YW	MILK	MARB	RE	\$W	\$B
1	5.0	78	134	38	.08	.63	70	126

ACT. BW	ADJ. WW	WWR	SCROTAL	ACT. EPD	RFI EPD
86	811	122	39.0	-1.1	-0.89

PATHFINDER SIRE

231

GM CHARM 231
 DOB: 3/14/2022 Reg # 20542111 Tattoo: 231

HAMILTON CHARM
 SHAW LADY PAYWEIGHT 6059

BUBS SOUTHERN CHARM AA31
 SILVEIRAS CONVERSION 8064
 HICKORY HILL ERICA 009
 BASIN PAYWEIGHT 1682
 SHAW LADY UPWARD 1186Y

MCD-2 PERFORMISS 4114
 MID PERFORMISS 625

BASIN YELLOWSTONE R178
 VERMILION YELLOWSTONE
 BASIN CAMILLA L868
 B C MID EMBLAZON 854E 702
 EOLAS PERFORMISS 439

CED	BW	WW	YW	MILK	MARB	RE	\$W	\$B
4	2.3	62	105	25	.69	.45	57	137

ACT. BW	ADJ. WW	WWR	SCROTAL	ACT. EPD	RFI EPD
78	662	100	38.0	-2.05	-1.36

234

GM CHARM 234
 DOB: 3/22/2022 Reg # 20542087 Tattoo: 234

HAMILTON CHARM
 SHAW LADY PAYWEIGHT 6059

BUBS SOUTHERN CHARM AA31
 SILVEIRAS CONVERSION 8064
 HICKORY HILL ERICA 009
 BASIN PAYWEIGHT 1682
 SHAW LADY UPWARD 1186Y

MCD-3 BLACKBIRD 183
 PERFORMISS 239

OFF POUNDER U831
 SCHURRTOP E267 X687
 BASIN ZARA 831D
 APEX TRANSFORM 013
 MID T P BLACKBIRD 765

CED	BW	WW	YW	MILK	MARB	RE	\$W	\$B
3	2.1	66	116	30	.36	.47	64	100

ACT. BW	ADJ. WW	WWR	SCROTAL	ACT. EPD	RFI EPD
72	681	103	36.5	1.9	-0.84

PATHFINDER DAM

235 GM CHARM 235

DOB: 3/24/2022

Reg # 20542105

Tattoo: 235

HAMILTON CHARM
BUBS SOUTHERN CHARM AA31
SHAW LADY PAYWEIGHT 6059

SILVEIRAS CONVERSION 8064
HICKORY HILL ERICA 009
BASIN PAYWEIGHT 1682
SHAW LADY UPWARD 1186Y

MJB 67C OF 3545 201Z
MCD -3-2 ERISKAY 814
MCD -2 ERISKAY 573

MCD SF ANSWER 71 - 3545
MJB JODIE 201Z
SINCLAIR FORTUNATE SON
BLEVINS ERISKAY MISSION 9652

CED	BW	WW	YW	MILK	MARB	RE	\$W	\$B
1	2.4	56	93	27	.49	.22	58	81
ACT. BW	ADJ. WW	WWR	SCROTAL	ACT. EPD	RFI EPD			
74	610	92	34.5	1.04	-0.54			

PATHFINDER DAM



236 GM EPIC 236

DOB: 4/1/2022

Reg # 20542107

Tattoo: 236

3F EPIC 4631
ICC EPIC 1429-8257
MCATL FOREVER LADY 1429-138

VARILEK PRODUCT 2010 04
ZEBO QUEEN 1072
S A V FINAL ANSWER 0035
ALC FOREVER LADY R02S

WRAF BELIEVE
GM -2-1 PERFORMISS 913
MCD-1 PERFORMISS 017

MCR HORIZON 081
WRAF CLOVANDA LADY 3194
C C A UNO 049
1236 PERFORMISS 017

CED	BW	WW	YW	MILK	MARB	RE	\$W	\$B
3	1.9	73	137	34	.45	.50	74	138
ACT. BW	ADJ. WW	WWR	SCROTAL	ACT. EPD	RFI EPD			
80	710	107	34.0	1.3	-0.77			

237 GM EPIC 237

DOB: 3/4/2022

Reg # 20549601

Tattoo: 237

3F EPIC 4631
ICC EPIC 1429-8257
MCATL FOREVER LADY 1429-138

VARILEK PRODUCT 2010 04
ZEBO QUEEN 1072
S A V FINAL ANSWER 0035
ALC FOREVER LADY R02S

AB-LVS CAPITALIST 4507
GM -2-1-5 DUTCHESS 926
MCD-1-5 DUTCHESS 507

CONNEALY CAPITALIST 028
AB-LVS EMMA 096
C C A UNO 049
MCD-5 DUTCHESS 277

CED	BW	WW	YW	MILK	MARB	RE	\$W	\$B
9	-1.4	59	116	39	.61	.43	71	122
ACT. BW	ADJ. WW	WWR	SCROTAL	ACT. EPD	RFI EPD			
75	678	102	37.5	1.68	-0.75			



Victor - Dallas - Leo

238 GM EPIC 238

DOB: 3/10/2022

Reg # 20542108

Tattoo: 238

3F EPIC 4631
ICC EPIC 1429-8257
MCATL FOREVER LADY 1429-138

VARILEK PRODUCT 2010 04
ZEBO QUEEN 1072
S A V FINAL ANSWER 0035
ALC FOREVER LADY R02S

TM CASH 516
GM-9 PEARLS 927
PEARLS PERFORMISS 009

BARSTOW CASH
MSU ELBA 002
COLE CREEK BLACK CEDAR 46P
PERFORMISS 228

CED	BW	WW	YW	MILK	MARB	RE	\$W	\$B
3	.3	58	106	34	.56	.21	69	119
ACT. BW	ADJ. WW	WWR	SCROTAL	ACT. EPD	RFI EPD			
80	655	99	36.5	NA	NA			



VICTOR GONI
307-217-0735

LEO MCDONNELL
406-780-0176

SAM FRASER
406-860-0590

SCOTT FRASER
406-860-6548

239

GM EPIC 239
 DOB: 3/10/2022 Reg # 20542109 Tattoo: 239

3F EPIC 4631
 ICC EPIC 1429-8257
 MCATL FOREVER LADY 1429-138

VARILEK PRODUCT 2010 04
 ZEBO QUEEN 1072
 S A V FINAL ANSWER 0035
 ALC FOREVER LADY R02S

TM CASH 516
 GM -9-9 MAIDEN 933
 MCD-9 MAIDEN 184

BARSTOW CASH
 MSU ELBA 002
 ROCK'N D PROFICIENT 2915
 MID PERFORMISS 650

CED	BW	WW	YW	MILK	MARB	RE	\$W	\$B
-4	2.9	80	140	26	.61	.32	69	144
ACT. BW	ADJ. WW	WWR	SCROTAL	ACT. EPD	RFI EPD			
85	698	105	38.0	-1.37	-1.13			



287

GM EFFECTIVE 287
 DOB: 3/9/2022 Reg # 20542112 Tattoo: 287

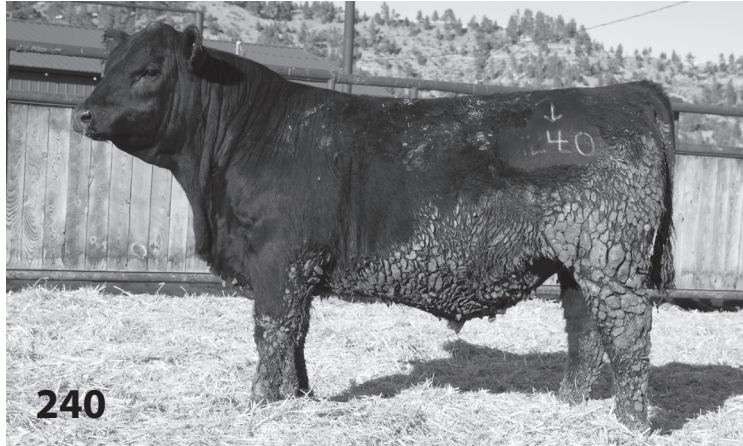
AB-LVS CAPITALIST 4507
 MCD EFFECTIVE 789
 MCD PERFORMISS 238

CONNEALY CAPITALIST 028
 AB-LVS EMMA 096
 WILLEKES CONVERTER 4402-9
 313 PERFORMISS 006

MCD PERFORMER 407
 MCD -2-9 BELLES 848
 MCD -9 BELLES 205A

KOUPAL CZECH 158
 BANIGANS JUNE 020
 ROCK'N D PROFICIENT 2915
 BELLES SHOSHONESS 155

CED	BW	WW	YW	MILK	MARB	RE	\$W	\$B
2	2.6	66	121	27	1.06	.31	60	150
ACT. BW	ADJ. WW	WWR	SCROTAL	ACT. EPD	RFI EPD			
76	674	102	NA	NA	NA			



240

GM EPIC 240
 DOB: 4/1/2022 Reg # 20542110 Tattoo: 240

3F EPIC 4631
 ICC EPIC 1429-8257
 MCATL FOREVER LADY 1429-138

VARILEK PRODUCT 2010 04
 ZEBO QUEEN 1072
 S A V FINAL ANSWER 0035
 ALC FOREVER LADY R02S

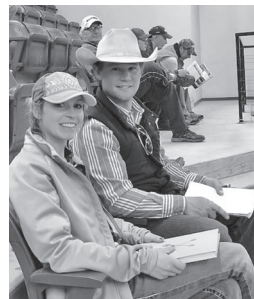
AB-LVS CAPITALIST 4507
 GM-2-2 PRIDE 983
 MCD-2 PRIDE 469

CONNEALY CAPITALIST 028
 AB-LVS EMMA 096
 PERFORMER 884
 AB-LVS PRIDE 291

CED	BW	WW	YW	MILK	MARB	RE	\$W	\$B
3	2.6	87	149	24	-.07	.36	73	111
ACT. BW	ADJ. WW	WWR	SCROTAL	ACT. EPD	RFI EPD			
80	710	107	35.0	-1.23	-1.16			



Don & Tammy Kruger Semen Testing



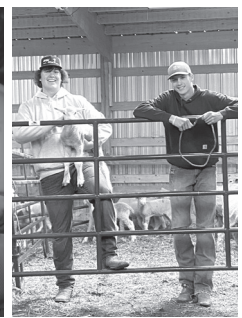
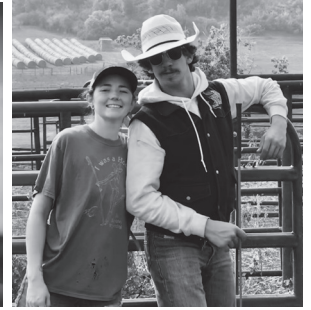
*We Appreciate Each
and Every one of our Customers*

BREEDING FOR PROFIT

79 % of the bulls in this sale above at industry average for \$W.

\$W (weaned calf value) represents 4 primary economic feeder factors: birth weight, weaning weight, maternal milk and nature cow size. If you keep replacement females, \$W is an important factor, as low birth weight, high growth, optimum milk and economical mature size are rewarded in \$W calculations.

If you sell your calves at weaning, a high \$W will have the greatest impact on your bottom line.



Our
Crew



EFFICIENCY SEMEN AVAILABLE

MCD EFFECTIVE 789

DOB: 03/08/2017 Reg # 18952013 Tattoo: 789

CONNEALY CAPITALIST 028 WILLEKES CONVERTER 4402-9
AB-LVS CAPITALIST 4507 MCD PERFORMISS 238
AB-LVS EMMA 096 313 PERFORMISS 006

CED	BW	WW	YW	MILK	MARB	RE	\$W	\$B
5	1.9	68	127	27	1.10	.45	59	184

\$25 SEMEN
\$35 CERTIFICATE

RFI -3.59



BCC RENOWN 1G

DOB: 01/17/19 Reg # 19499594 Tattoo: 1G

RITO 707 OF IDEAL 3407 7075 C F RIGHT DESIGN 1802
S A V RENOWN 3439 JAF MS WITCH 35
S A V BLACKCAP MAY 4136 BT MS WITCH 370P

CED	BW	WW	YW	MILK	MARB	RE	\$W	\$B
2	.1	57	98	17	.00	.51	55	90

We purchased this bull at the 2020 Midland Bull Test from the Barragree Family. His RFI was -2.4 with an Efficiency ratio of 122 and out of a cow that was 12 years old with 10 calves have a weaning ratio of 101

\$10 SEMEN
\$15 CERTIFICATE

RFI -2.51



GRANGER BLACK EAGLE 822

DOB: 02/09/2018 Reg # 19213529 Tattoo: 822

GRANGER GREAT FALLS 053 GRANGER BLACK CEDAR 150
GRANGER GREAT FALLS 630 GRANGER PRIDE RACHEL 685
GRNAGER PRIDE RACHEL 890 GRANGER PRIDE RACHEL 420

CED	BW	WW	YW	MILK	MARB	RE	\$W	\$B
6	2.3	81	144	27	.25	.60	70	127

\$25 SEMEN
\$35 CERTIFICATE

RFI -4.93



CAMPBELL RAINFALL 932

DOB: 02/27/2019 Reg # 19609626 Tattoo: 932

COLEMAN CHARLO 0256 BARSTOW BANKROLL B73
S A V RAINFALL 6846 PROBST MISS BANKROLL 748
S A V BLACKCAP MAY 4136 LEADORE DEENA C732

CED	BW	WW	YW	MILK	MARB	RE	\$W	\$B
11	-1.1	60	111	30	.48	.70	74	127

Campbell Rainfall continues on with the genetic value of SAV Rainfall. He came out of the 2020 Midland Test with an Efficiency ratio of 109. A calving ease bull who is in the top 10% for Heifer Pregnancy, top 15% for Combined Foot Score, top 4% for \$ Maternal with a great ribeye.

\$10 SEMEN
\$15 CERTIFICATE

RFI -4.83



SIRE: S A V RAINFALL 6846

*Proven
Heifer Bull*

HAMILTON CHARM

DOB: 01/28/20 Reg # 19888269 Tattoo: 1160

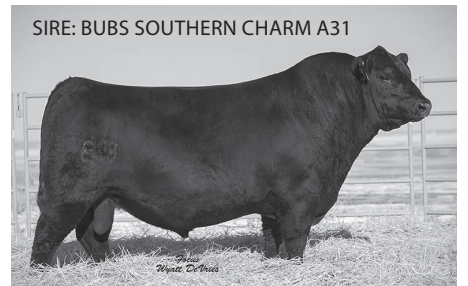
SILVEIRAS CONVERSION 8064 BASIN PAYWEIGHT 1682
BUBS SOUTHERN CHARM AA31 SHAW LADY PAYWEIGHT 6059
HICKORY HILL ERICA 009 SHAW LADY UPWARD 1186Y

CED	BW	WW	YW	MILK	MARB	RE	\$W	\$B
3	3.3	75	128	27	.51	.33	76	133

An exceptional Southern Charm son that came of of the 2021 Midland Sale. The Champion **High Efficiency** in Group 1 at Midland in 2021. A very nice bull with a log of shape, thickness and great feet. First set of calves out of this bull have hit the ground running and are already catching eyes.

\$15 SEMEN
\$15 CERTIFICATE

RFI -2.62



SIRE: BUBS SOUTHERN CHARM A31

ORDER NOW FOR SPRING BREEDING, CALL LEO OR VICTOR

MCDONNELL ANGUS

The Efficiency Breeders

GM Livestock

Victor and Darcy Goni

PO Box 334 • Buffalo WY 82834

FIRST CLASS MAIL • RETURN SERVICE REQUESTED • DATED MATERIAL



A Legacy PROGRAM

Proven PERFORMANCE DATA

Progressive EFFICIENCY GENETICS

Victor G. Goni 307-217-0735

Leo McDonnell 406-780-0716

Bulls OF
THE
BIGHORNS

WWW.MCDONNELLANGUS.COM

PO Box 334 | Buffalo, WY 82834

Email: 307Angus@gmail.com

WWW.MCDONNELLANGUS.COM OR FIND US ON FACEBOOK 